

AMPLIFICATION SYSTEMS/CLASSROOMS

Bid 12-053 Interactive Technology

For the most current product information and pricing for this bid go to the KCDA website www.kcda.org, click on the Awarded Contracts tab on the left side navigation bar and then click on KCDA Contracts. If you click on or scroll down to Interactive Technology you will have access to the webpages for this bid.

AMPLIFICATION SYSTEMS / P/A SYSTEM

A) Personal P/A System

Ideal for small meetings, briefings, facility tours, and classroom instruction. This unit is self-contained and weighs Eight ounces. Plug in the microphone, clip the lightweight amplifier onto your belt and turn it on! 2-Watt amplifier, Mic/Aux input (3.5mm), Separate volume and tone controls. Complete package includes: VoiceSaver, Headset Microphone, Charging Adapter, Adjustable Belt, 4 rechargeable nickel metal hydride 'AA' batteries. Califone, PA-282AV. No Substitute.

KCDA No.	U/M	1-5	6+
29020	Ea	72.60	71.47

AUDIO CASSETTE

B) Boom Box

20 programmable, variable speed CD player/cassette recorder, AM/FM radio and 2x counter. Built-in microphone and listening center with 6 headphone 1/4" jacks. AC and battery operated. Califone, 2455AV-2. No Substitute.

KCDA No.	U/M	1-11	12+
29105	Ea	245.64	241.96

C) CD Player/Cassette Player-Recorder

Combination cassette recorder/player and CD player, vibration and skip resistant CD deck with variable speed CD control. 7 watts amplifier output, 2-4" built-in speakers with left/right balance, records audio tapes from CDs, 5 position listening center. Eiki, 8080A. No Substitute.

KCDA No.	U/M	1-5	6+
29108	Ea	273.52	269.09

D) Tape Cassette Recorder/Player

AC/DC with a 1/4" monaural headphone jack, built-in condenser microphone, 2-1/2" permanent dynamic speaker, three wire attached cord. Califone, 3132AV. No Substitute.

KCDA No.	U/M	1-7	8+
29101	Ea	50.63	49.81

E) Hamilton Cassette/CD/AM/FM Radio Boom Box

Portable Boom Box, includes cassette recorder, records from CD or built in microphone. Programmable CD player, AM/FM radio tuner, six 1/8" headphone jacks, 4 watt speaker, uses 8 "D" batteries (not included) or AC 120 volt cord. Dimensions: 14" wide x 10" high x 8" deep. Weight: 7 lbs. Hamilton MPC-5050, No Substitute.

KCDA No.	U/M	1-2	3+
29125	Ea	60.48	59.04

AUDIO CASSETTE ACCESSORIES

F) Audio Cassette Recording Tapes

Economy bulk pack, unboxed, five screw assembly. Qualifying Standard: BASF.

KCDA No.	Desc	U/M	1-11	12+
29905	60 Minutes (30x2)	25/Pkg	54.34	53.46
29904	90 Minutes (45x2)	25/Pkg	74.10	72.90

G) Audio Cassette Tape Boxes

Hard plastic cassette case that holds a "J" card and the cassette. (Cassette is not included) High Quality Case designed to store 1 audio cassette tape. Norelco Style, with rounded corners, Clear Cover with Clear Backing. Qualifying Standard: Norelco.

KCDA No.	U/M	1-74	75+
29909	25/Pkg	9.64	9.49

H) Maxell Audio Cassette Head Cleaner

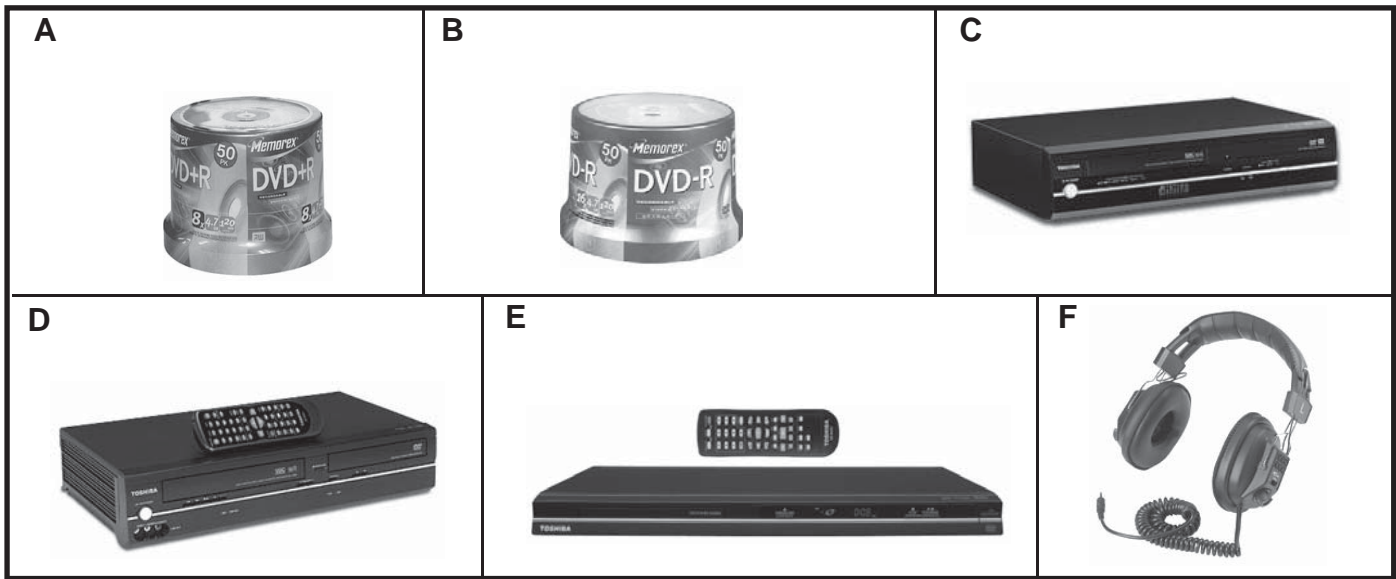
Economical, non-abrasive, two-step audio head wet cleaning system; cleans entire tape travel path of contaminants, tape heads, guides, capstan & pinch rollers; use after every 20 hours of use or when experiencing loss of sound quality. Maxell 191018, No Substitute.

KCDA No.	U/M	1-59	60+
29914	Ea	1.93	1.90

I) Maxell Audio Cassette Recording Tapes

This audio cassette tape's wide-frequency response and uniform output assure audio and Dictation recording accuracy even with repeated usage. Designed for high-use applications. Qualifying Standard: Maxell.

KCDA No.	Desc	U/M	1-99	100+
29893	30 Minutes (15x2)	Ea	0.45	0.43
29900	60 Minutes (30x2)	Ea	0.75	0.72
29899	90 Minutes (45x2)	Ea	0.98	0.94
29898	120 Minutes (60x2)	Ea	1.28	1.24



CAMCORDERS

Bid 12-053 Interactive Technology
 For the most current product information and pricing for this bid go to the KCDA website www.kcda.org, click on the Awarded Contracts tab on the left side navigation bar and then click on KCDA Contracts. If you click on or scroll down to Interactive Technology you will have access to the webpages for this bid.

DOCUMENT CAMERAS

Bid 12-053 Interactive Technology
 For the most current product information and pricing for this bid go to the KCDA website www.kcda.org, click on the Awarded Contracts tab on the left side navigation bar and then click on KCDA Contracts. If you click on or scroll down to Interactive Technology you will have access to the webpages for this bid.

DVD DISKS

A) DVD+R Recordable Disks
 4.7GB storage, more than six times the storage capacity of a CD. Great for audio, video or data storage. Durable write-once format with long archival life. Write-compatible with DVD drives and recorders supporting DVD+R. 16x, 50 per spindle. Memorex 32025619, No Substitute.

KCDA No.	U/M	1-9	10+
29277	Ea	14.02	13.81

B) DVD-R Recordable Disks
 Write once format may not be altered once data is written to the disc. Read compatible with the majority of DVD-ROM drives and DVD video players. Single-sided, 4.7 GB. Multimedia storage such as combined data, music/video. Branded with manufacturers logo on one side. Surface color silver packaging spindle (plastic container, does not include jewel case or inserts) 50/spindle. Qualifying Standard: Memorex.

KCDA No.	U/M	1-5	6+
29279	Ea	14.01	13.79

*** Don't See What You Need Here?**
We can source it for you.

Contact KCDA customer service with the details at customerservice@kcda.org or 800-422-5019.

DVD PLAYERS/RECORDERS

C) DVD Recorder/VCR Combination with Tuner
 With 1080 HD video upconversion, built in ATSC, NTSC, QAM TV tuners, this under offer the ability to record TV shows directly from cable box, satellite receiver, or even over-the-air channels. Records onto DVD-RW and DVD+RW discs. Progressive scan player capable of upconverting your DVDs to 720p, 1080i, and 1080p through the HDMI output. 17" wide x 4" high x 10-1/2" deep, 9-1/2 lbs, black. Qualifying Standard: Toshiba.

KCDA No.	U/M	1-2	3+
28984	Each	220.44	214.83

D) DVD/VCR COMBO PLAYER
 Combines the picture and sound advantages of a progressive scan DVD player with the convenient recording, and playback option of the VCR. Simultaneous DVD playback and VHS record for watching a DVD will recording a TV program. 4-head VCR, commercial skip, video output and S-video output. Dimensions: 17.13" wide x 9.17" deep x 3.7" high. Qualifying Standard: Toshiba.

KCDA No.	U/M	1-5	6+
29121	Ea	84.53	83.09

E) Toshiba DVD/CD Player
 The ColorStream Pro Progressive scan video output enhances the purity of an image's color and detail. The JPEG photo user option lets you view digital photos from your CDs and DVDs right on your very own television. Playback format: DVD, DVD+/-R/RW, CD-R/RW, VCD, MP3, WMA, JPEG, SVCD 14bit video DAC with 108MHz processing. Remote control with batteries, Owner's manual, AC cord, dimensions: 1.69"h x 8.23"d x 16.93"w. Toshiba SD4300, No Substitute.

KCDA No.	U/M	1-5	6+
29082	Ea	41.76	41.11

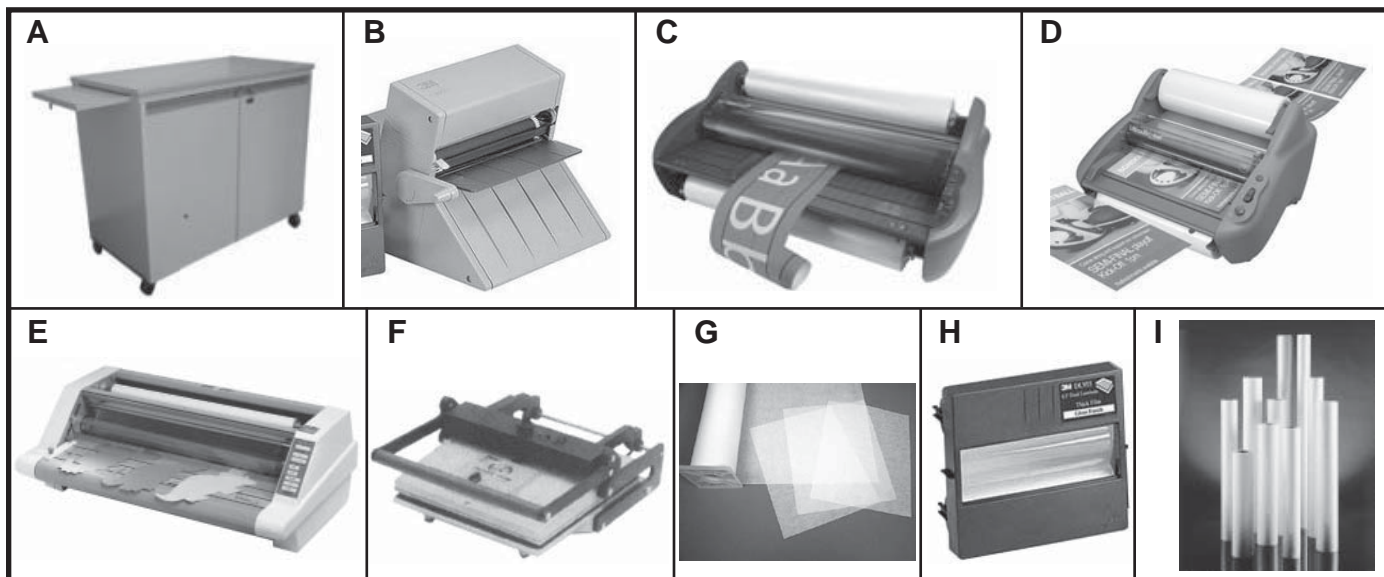
HEADPHONES

F) Headphones Mono/Stereo
 These headphones are switchable mono/stereo, 3.5mm mini plug w/snap-on 1/4" adapter, 10 foot coiled cord, dual volume controls on ear cups. 1 year warranty. Qualifying Standard, Califone 3068AV.

KCDA No.	U/M	1-11	12+
29019	Ea	7.06	6.89

Audio Visual





KEYBOARDS

Bid 12-053 Interactive Technology

For the most current product information and pricing for this bid go to the KCDA website www.kcda.org, click on the Awarded Contracts tab on the left side navigation bar and then click on KCDA Contracts. If you click on or scroll down to Interactive Technology you will have access to the webpages for this bid.

LAMINATING CABINETS

A) GBC Laminator Cabinet

Deluxe locking laminator cabinet, rolling casters for mobility, slide out shelf, supports laminators up to 35" and 200 lbs. Dimension: 36" wide x 18" deep x 30" high. 1 year Manufacturer warranty. GBC 1154314, No Substitute.

KCDA No.	U/M	1
29016	Ea	524.37

LAMINATING MACHINES

B) 3M Desktop Laminator

Non-electric, heat free, hand operated laminator uses adhesive film cartridges. Portable, lightweight, versatile, safe. Integrated cutoff blade. Laminates any length document. Uses KCDA No. 29230 Film. 3M LS950, No Substitute.

KCDA No.	U/M	1-11	12+
29005	Ea	122.27	120.35

C) Pinnacle 27 EZLoad Laminator

27" wide roll laminator, warm up time is 6-9 minutes, variable temperature control for use with Nap-Lam I and II film up to 3mil. Variable speed control. Patented EZLoad eliminates incorrectly loaded film problems. Weight: 106 lbs. Dimension: 35-1/2" wide x 21" long x 14-1/4" high. 1 year warranty. Must use EZ Load Film see KCDA Nos. 29307, 29310, 29311, 29312 & 29313. GBC Pinnacle 27 EZLoad, 1701720EZ, No Substitute.

KCDA No.	U/M	1
29004	Ea	1373.40

D) Ultima 35 EzLoad Laminator

Thermal roll laminator with unique EzLoad roll film is simple to use, fast and flexible. Offers lamination width up to 12", all lengths. Runs NAP II film from 1.7 mil up to 10 mil thickness. Variable temperature. 1 minute warm-up time. Fixed speed of 3' per min. Weighs 35.2 lb. For film see KCDA Nos. 29250, 29251 and 29252. GBC 1701680, No Substitute.

KCDA No.	U/M	1-1	2+
29001	Ea	440.39	400.84

E) Ultima 65 Laminator

Protects sheets up to 27", variable speed control, reverse switch, sliding blade cutter. Weighs 104 lbs. dimensions: 21" long x 32.5" wide x 12.5" high. GBC Ultima 65, No Substitute.

KCDA No.	Mfg. No.	U/M	1
29000	65	Ea	1426.95

F) Laminating Press

For dry mounting, laminating, cloth backing and making transparencies, 115 volts. Platen size, 18-1/2" x 23" up to 36" larger widths, 13 amps, 1,500 watts. Qualifying Standard: Seal Commercial.

KCDA No.	U/M	1-5	6+
29021	Ea	1659.26	1645.37

LAMINATING SUPPLIES / DRY MOUNT TISSUE

G) Dry Mount Tissue

Excellent general-purpose tissue that works well with RC or fiber based prints. Has a very low activating temperature of 165 degrees for use with items sensitive to heat. It is ideal for items like ink jet media where high heat is not possible. Works well with substrates such as cardboard and foam board. The product bonds as it cools to provide a strong lasting bond but can be removed by reheating the subject to 200 degrees. 20-1/2" x 50' Qualifying Standard: Drylam.

KCDA No.	U/M	1-11	12+
29280	1/Roll	61.69	60.69

LAMINATING SUPPLIES / FILM

H) 3M Laminating Film

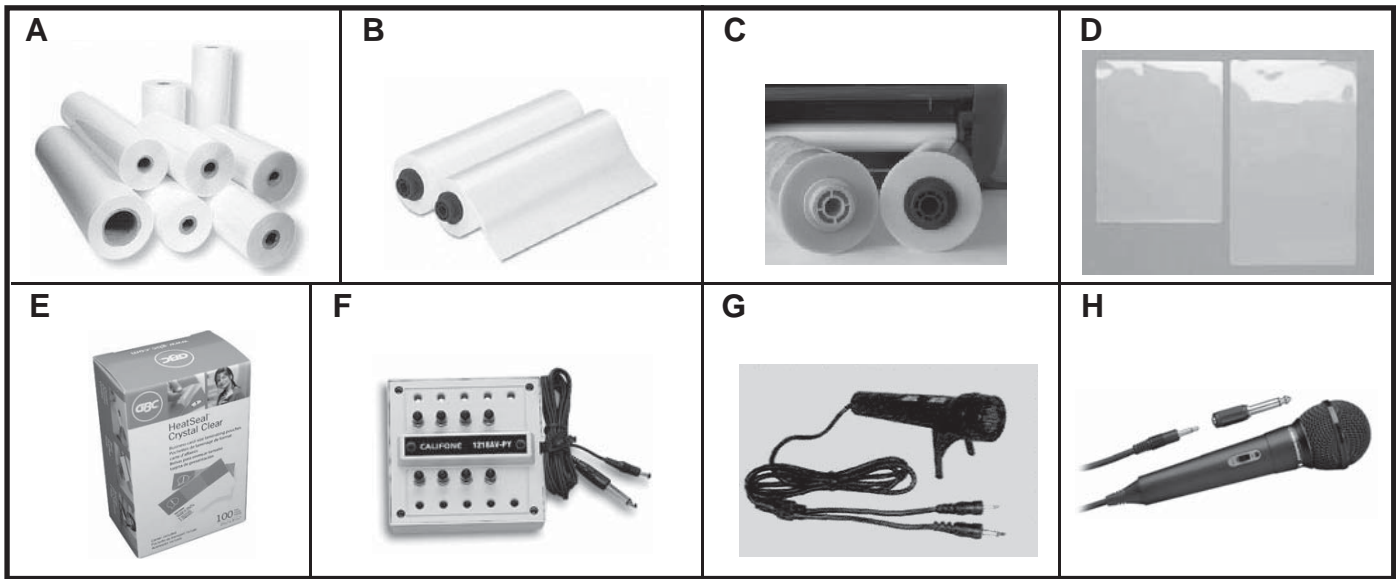
Cartridge for desktop laminator KCDA No. 29005 Laminates both sides, 8-1/2"x11", 100 ft. roll. 3M DL951, No Substitute.

KCDA No.	U/M	1-29	30+
29230	Ea	37.04	36.46

I) Naplam II Laminating Film

Polyester-based thermal laminating film, 1" core, designed to run at a lower temperature and promote excellent adhesion with great clarity on coated/glossy papers and heavy ink coverage. GBC Naplam II, No Substitute.

KCDA No.	Size	Weight	Mfg. No.	U/M	1-23	24+
29293	25"x200	3 ml	3125702	1/Roll	37.30	36.42
29294	27"x250	3 ml	3125710	1/Roll	46.68	45.57
29289	25"x200	5 ml	3125901	1/Roll	53.31	52.04



A) GBC Laminating Film

Clear mylar, roll is marked before the end. 500 foot rolls. GBC, No Substitute.

KCDA No.	Weight	Width	Core	Mfg. No.	U/M	1-11	12+
29282	1.5 Mil	9"	1"	3000001	2 Rolls/Ctn	34.56	34.00
29283	1.5 Mil	12"	1"	3000002	2 Rolls/Ctn	34.51	33.95
29284	1.5 Mil	18"	1"	3000003	2 Rolls/Ctn	40.35	39.69
29285	1.5 Mil	25"	1"	3000004	2 Rolls/Ctn	40.61	39.95
KCDA No.	Weight	Width	Core	Mfg. No.	U/M	1-23	24+
29288	1.5 Mil	27"	1"	3126061	1/Roll	30.11	29.39
KCDA No.	Weight	Width	Core	Mfg. No.	U/M	1-11	12+
29281	1.7 Mil	27"	1"	3125410	4 Rolls/Ctn	194.49	189.86
KCDA No.	Weight	Core	Width	Mfg. No.	U/M	1-23	24+
29286	1.5 Mil	18"	2-1/4"	3000006	1/Roll	26.93	26.29
29287	1.5 Mil	25"	2-1/4"	3000007	1/Roll	30.44	29.71

LAMINATING SUPPLIES / FILM, EZLOAD

B) EZLoad Laminating Film

EZLoad roll film system. Fits desktop GBC Ultima 35 EZLoad laminator KCDA No. 29001. GBC, No Substitute.

KCDA No.	Size	Weight	Mfg. No.	U/M	1-5	6+
29250	12"x300	1.7	3125365EZ	2/Box	38.10	37.50
29251	12"x200	3.0	3125913EZ	2/Box	50.80	50.00

C) EZLoad Laminating Film

These specially designed rolls are made especially for the GBC Pinnacle 27 EZ Load Roll Laminator, KCDA No. 29004. This EZload Roll Film utilizes patented technology to virtually eliminate costly film loading errors. Color-coded end caps help make film loading a snap eliminating costly service calls and making it virtually impossible to load your laminator backwards. This film is designed exclusively for use with GBC Pinnacle EZload roll laminators. GBC No Substitute.

KCDA No.	Size	Weight	Mfg. No.	U/M	1-5	6+
29307	25x500	1.2 mil	3748207EZ	2/Box	54.31	53.46
29310	25x500	1.5 mil	3748201EZ	2/Box	62.47	61.49
29312	25x500	1.7 mil	3748203EZ	2/Box	75.22	74.04
29313	25x250	3.0 mil	3748204EZ	2/Box	67.57	66.51
29311	25x500	3.0 mil	3748202EZ	2/Box	63.75	62.75

*** Don't See What You Need Here?**
We can source it for you.

Contact KCDA customer service with the details at customerservice@kcda.org or 800-422-5019.

LAMINATING SUPPLIES / POUCHES

D) Dry-Lam Laminating Pouches

Dependable Dry-Lam two sided 3ml per side, lamination pouches encapsulate documents to provide outstanding protection from dirt, water and wear. Each box comes with 2 carriers to keep the laminator clean. Dry-Lam, No Substitute.

KCDA No.	Size	Mfg. No.	U/M	1-11	12+
29295	9"x12"	P309	100/Box	8.79	8.65
29296	12"x15"	P312	100/Box	17.65	17.37
29297	18"x24"	P318	50/Box	23.97	23.59

E) HeatSeal Laminating Pouch

Nothing shows off your ideas better than a lamination pouch. You'll experience brilliant color, superior protection and crisp, professional results with Crystal Clear pouches. HeatSeal Crystal Clear, Business card 2-3/16" x 3-11/16", 5 Mil. GBC 3200421, No Substitute.

KCDA No.	U/M	1-9	10+
29299	100/Box	12.61	12.41

LISTENING STATIONS

F) Listening Stations

With volume control, free standing, case or table mountable, permanently attached cord, impact-resistant. Califone, 1218AVPY. No Substitute.

KCDA No.	Description	U/M	1-11	12+
29015	8 Station	Ea	13.62	13.30

MICROPHONES

G) General Purpose Microphone

Approximately 4' cord with stand, 300 ohm, on-off switch, 3.5 mini - 2.5 sub-mini plugs. Qualifying Standard: Cal Rad.

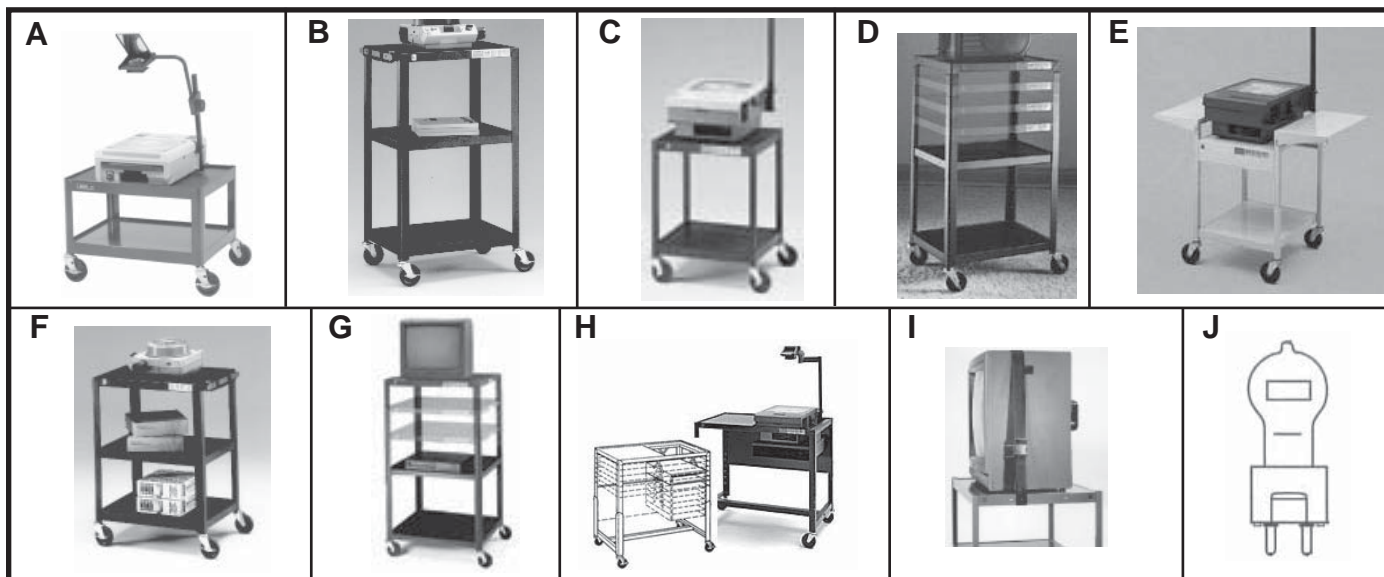
KCDA No.	U/M	1-11	12+
29017	Ea	11.39	11.11

H) General Purpose Microphone

Unidirectional handheld microphone with 10' cable and 3.5mm mini-plug attached. 1/4" adapter included. Frequency 80-12,000 Hz. 500 ohms. Qualifying Standard: Audio-Technica.

KCDA No.	U/M	1-11	12+
29018	Ea	11.95	11.67





MOUNTING SYSTEMS

Bid 12-053 Interactive Technology

For the most current product information and pricing for this bid go to the KCDA website www.kcda.org, click on the Awarded Contracts tab on the left side navigation bar and then click on KCDA Contracts. If you click on or scroll down to Interactive Technology you will have access to the webpages for this bid.

PROJECTOR SUPPLIES / CARTS

A) Mobile Projection Cart

24" wide x 17" high x 18" deep, top and one shelf, 5" casters, electric cord assembly and 20' of #16 three-wire cord. Qualifying Standard: Dalite.

KCDA No.	U/M	1-7	8+
29080	Ea	136.89	134.66

B) Mobile Projection Cart

42" high, 18" x 24" top and two shelves, 5" casters, electric cord assembly and 20' of #16 three-wire cord. Qualifying Standard: Bretford.

KCDA No.	U/M	1
29097	Ea	100.29

C) Mobile Projection Cart

20" wide x 26" high x 18" deep, 4" casters, top and one shelf. Electric cord assembly and 20' of #16 three-wire cord. Qualifying Standard: Bretford.

KCDA No.	U/M	1
29092	Ea	161.69

D) Overhead Projection Cart

Adjustable height from 24" to 42", shelf size is 18" by 24". 4" casters, 2 locking, cable pass through holes, 2 outlet electric assembly. Qualifying Standard: Bretford.

KCDA No.	Color	U/M	1
29087	Quartz	Ea	101.56

E) Overhead Projection Cart

Steel construction with fold down drop leaves, platform: 17" wide x 19-3/4" deep. Drop leaves: 11" wide x 20-3/16" deep. Height is 29". Putty color powder coat paint, two-outlet electrical unit and 5" hard rubber casters, 2 locking. Qualifying Standard: Bretford.

KCDA No.	U/M	1
29094	Ea	113.75

F) Overhead Projection Cart

Mobile, 34" high, 18" x 24" top and two shelves, 5" casters, electric cord assembly and 20' of #16 three-wire cord. Qualifying Standard: Bretford.

KCDA No.	U/M	1
29095	Ea	96.93

G) Overhead Projection Cart

Adjustable, mobile, 28" wide x 36-5/4" high x 24" deep, three shelves, middle to bottom shelf 17-1/2", 5" casters, electrical cord assembly and 20' of #16 three-wire cord, ships disassembled. Qualifying Standard: Bretford.

KCDA No.	U/M	1
29079	Ea	168.18

H) Overhead Projector Cart

Adjustable, transports up to 460 pounds. Ribbed rubber mat for top shelf, 37" wide x 27" to 41" high x 22-1/2" deep, projector opening: 17-1/2" wide x 20-1/2" deep, 5" heavy duty casters, two with locking brakes, black enamel with 20" writing surface, two-grounded outlet cords. Qualifying Standard: Bretford.

KCDA No.	U/M	1
29077	Ea	187.15

PROJECTOR SUPPLIES / EQUIPMENT STRAPS

I) Equipment Straps

Nylon web strap with a steel grip buckle, 1" wide. Qualifying Standard: Abolins.

KCDA No.	Size	U/M	1-23	24+
29188	9 ft Long for 20" Monitors	Ea	10.75	10.50

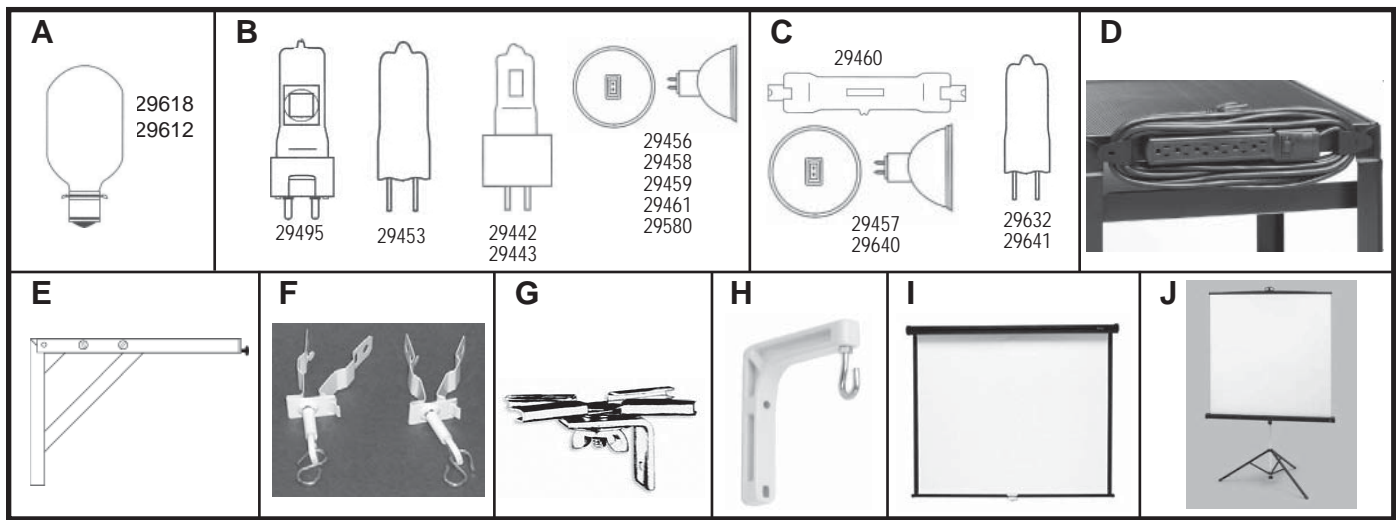
KCDA No.	Size	U/M	1-47	48+
29190	12 ft Long for 27" Monitors	Ea	11.36	11.09

PROJECTOR SUPPLIES / LAMPS / "B" SERIES

J) Projection Lamps "B" Series

Drawings not to scale.

KCDA No.	ANSI Code	Volts/Watts	Average Hours of Life	U/M	1-71	72+
					3.00	2.91
29544	BHC/DYS/DYV	120/600	75	Ea	3.00	2.91
29543	BHC/DYS/DYV-5	125/600	75	Ea	3.26	3.16



PROJECTOR SUPPLIES / LAMPS / "D" SERIES

A) Projection Lamps "D" Series

Drawings not to scale.

KCDA No.	ANSI Code	Volts/Watts	Average Hours of Life	U/M	1-71	72+
29618	DRC/DRB	1000/120	50	Ea	16.44	15.94
29612	DRS	1000/120	25	Ea	15.97	15.48

PROJECTOR SUPPLIES / LAMPS / "E" SERIES

B) Projection Lamps "E" Series

Drawings not to scale.

KCDA No.	ANSI Code	Volts/Watts	Average Hours of Life	U/M	1-71	72+
29495	EHA	120/500	75	Ea	10.18	9.87
29456	ELH	120/300	35	Ea	4.83	4.68
29459	ENX	82/360	75	Ea	3.29	3.23
29458	ENX-5	86/360	75	Ea	3.71	3.59
29453	EVD	36/400	50	Ea	2.74	2.66
29461	EVW	82/250	50	Ea	6.39	6.20
29442	EYB	82/360	75	Ea	2.94	2.85
29443	EYB-5	86/360	75	Ea	3.00	2.91
29580	EXR	82/300	35	Ea	4.83	4.68

PROJECTOR SUPPLIES / LAMPS / "F" SERIES

C) Projection Lamps "F" Series

Drawings not to scale.

KCDA No.	ANSI Code	Volts/Watts	Average Hours of Life	U/M	1-71	72+
29460	FAL	120/420	75	Ea	7.18	6.96
29632	FCS	24/150	50	Ea	1.30	1.26
29641	FNT	24/275	75	Ea	3.26	3.16
29457	FHS	82/300	70	Ea	4.83	4.68
29640	FXL	82/410	50	Ea	4.31	4.17

PROJECTOR SUPPLIES / POWER STRIP

D) Bretford AV Cart Electrical Unit

This Electrical unit attaches to any steel Bretford television, audio visual, overhead projector cart, or security center without the use of tools. 6 electrical outlets with surge and overload protection and an on/off switch. 20' long, 3-wire power cord with grounded plug. Mounting bracket doubles as a cord winder. Includes all hardware for mounting to carts and retrofits onto existing Bretford carts by using pre-drilled holes in the shelf. Bretford E6, No Substitute.

KCDA No.	Desc	U/M	1
29249	6 Outlets	Ea	15.07

PROJECTOR SUPPLIES / WALL SCREEN CLAMPS

E) Draper's Keystone Eliminator Wall Brackets

Made with heavy gage angle steel brackets with white epoxy powder coat finish, and adjusts between 16" to 24" from wall by simple wing and bolt adjustment. Qualifying Standard: Da-Lite.

KCDA No.	U/M	1-11	12+
29110	Pair	21.45	20.95

F) Scissor Clip Wall Screen Brackets

For dropped ceiling-type T-rails, T-bars, supports screens up to 50 pounds. Da-Lite 78445, No Substitute.

KCDA No.	U/M	1-11	12+
29111	Pair	5.95	5.80

G) T-Bar Twist Clips

Mount screens directly to T-irons, on supporting suspended ceilings without tools. Draper 227016, No Substitute.

KCDA No.	U/M	1-11	12+
29113	Pair	7.20	7.03

H) Wall Screen Brackets

Heavy duty plastic wall screen bracket, non-adjustable. Extends wall screen 6" out from wall, white. Qualifying Standard: Da-Lite.

KCDA No.	U/M	1-11	12+
29114	2/Box	7.97	7.78

PROJECTOR SUPPLIES / WALL SCREENS

I) Projection Wall/Ceiling Screen

This projection screen can be used on the wall or hung from the ceiling. Matte white for superior image resolution and accurate color reproduction. The patented system ensures the secure attachment of the screen to its rolling mechanism. The heavy duty spring helps to maintain the original retraction tension. Powder coated end caps and flat back design. Hardware not included. Contains 10% Post Consumer and 15% Pre-Consumer recycle content. Quartet 684S, No Substitute.

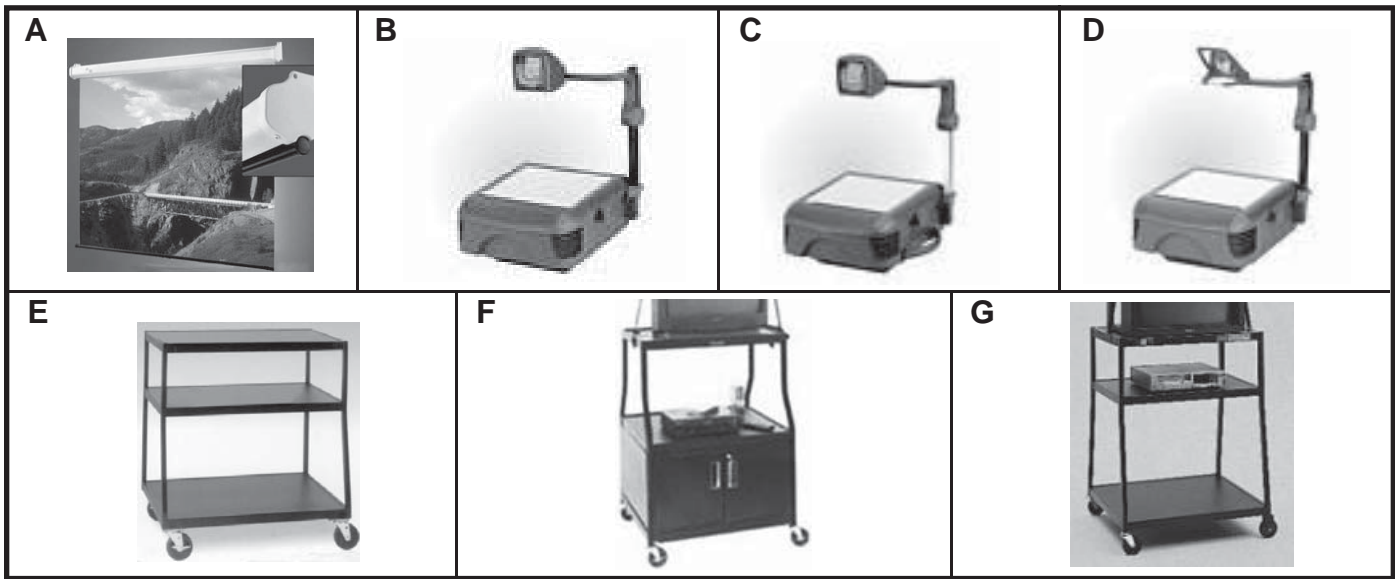
KCDA No.	U/M	1-11	12+
29167	Ea	222.25	218.79

J) Tripod Style Screens

Matte white, fiberglass, cam lock metal roller system, built-in keystone eliminator and plunger lock for secure setting, gable constructed aluminum legs, height adjusts to room with an 8' ceiling. Qualifying Standard: Buhl.

KCDA No.	Size	U/M	1-7	8+
29165	60" x 60"	Ea	85.21	83.83
29166	70" x 70"	Ea	98.68	97.08





A) Wall Screens

Fiberglass, matte white, cam lock metal roller system, mechanical pull down locks at intervals. Qualifying Standard: Da-Lite.

KCDA No.	Size	U/M	1-5	6+
29130	70x70	Ea	59.63	58.66
29120	60x60	Ea	51.62	50.79
29135	96x96	Ea	129.00	125.95

PROJECTORS/LCD & DLP

Bid 12-053 Interactive Technology

For the most current product information and pricing for this bid go to the KCDA website www.kcda.org, click on the Awarded Contracts tab on the left side navigation bar and then click on KCDA Contracts. If you click on or scroll down to Interactive Technology you will have access to the webpages for this bid.

PROJECTORS / OVERHEAD

B) 3M Overhead Projector

Articulating closed doublet lens for uniform focus & sharpness, the closed-head design protects lens from dust & dirt. Delivers high-quality presentations, w/2,500 lumens for high resolution images. Lamp ejector that makes replacing lamps simple, fold down post that makes storing & moving simple, thermostat that prevents overheating, and power cord wrap. Lamp type ENX, overall size 14" wide x 18" deep x 28" head height 19 lbs. 3M, 1830. No Substitute.

KCDA No.	U/M	1-3	4+
29303	Ea	181.54	180.06

C) 3M Overhead Projector

Articulating closed doublet lens for especially crisp screen images. Closed head prevents tampering w/the precision two-element lens. Color-tuning dial for edge to edge brightness, & high to low intensity switch that adjusts for 2,400 lumens to 2,800. Hush quiet fan for quieter presentations. Carrying handle & fold-down post for easy storing and moving, convenient digital clock, lamp changer & power cord wrap. Lamp type ENX, 14"Wx18"Dx28"H. 19lbs. 3M, 1880. No Substitute.

KCDA No.	U/M	1-3	4+
29308	Ea	212.28	210.55

D) 3M Overhead Projector

Offers an open wide-angle singlet lens & 2,500 lumens of light output for vivid images. Features include soothing low-glare stage, convenient fold down post for easy storage, extra long power cord for hard to reach electrical outlets, and handy power cord wrap. Comes with a useful lamp ejector that makes changing lamps simple & a thermostat that protects the unit from over heating. Lamp type ENX, overall size is 14"wx18"dx28H. 18.8 lbs. 3M, 1810. No Substitute.

KCDA No.	U/M	1-3	4+
29300	Ea	161.96	160.64

TELEVISIONS

Bid 12-053 Interactive Technology

For the most current product information and pricing for this bid go to the KCDA website www.kcda.org, click on the Awarded Contracts tab on the left side navigation bar and then click on KCDA Contracts. If you click on or scroll down to Interactive Technology you will have access to the webpages for this bid.

TELEVISION SUPPLIES / CARTS

E) Television Cart

Large monitor TV cart, 41" high with 5" plate, casters - 2 locking. Overall dimensions: 37" wide x 27-1/2" deep holds up to 35" televisions. Qualifying Standard: Bretford.

KCDA No.	U/M	1
29186	Ea	212.50

F) Television Cart

Wide body, with locking cabinet, 32" wide x 27" deep x 48" high, solid steel construction, two outlet electrical assembly, 4" casters (two locking), 20' extension cord with cord winder, recommended for TVs up to 32", UL Listed. Qualifying Standard: Bretford.

KCDA No.	U/M	1
29076	Ea	162.25

G) Television Cart

Wide body TV cart, three shelves, 32"x27"x44" high, holds 27" TV, 5" swivel casters with brakes, with a 20' electrical unit. Qualifying Standard: Bretford.

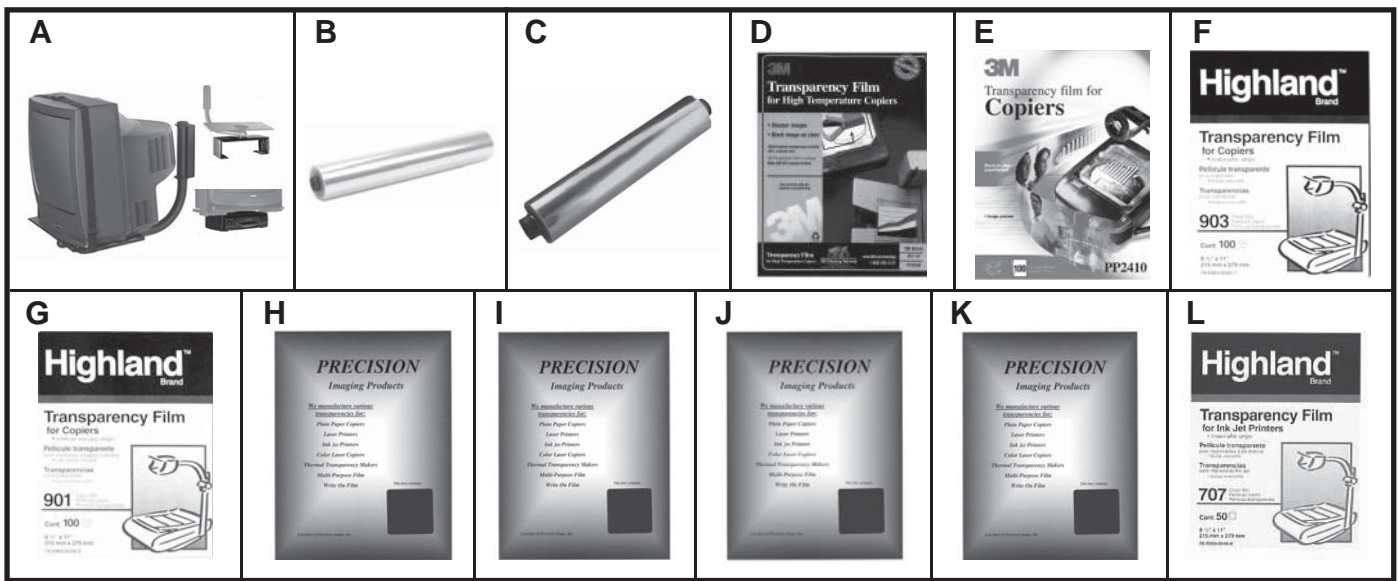
KCDA No.	U/M	1
29184	Ea	141.20



Don't See What You Need Here?

We can source it for you.

Contact KCDA customer service with the details at customerservice@kcda.org or 800-422-5019.



TELEVISION SUPPLIES / WALL PLATFORMS

A) Television Wall Mount Platform

Use with CRTs and TVs ranging from 13" to 27". From size-specific models to adjustable universal models, this wall mount provides strength and reliability. The VCR attachment is adjustable in both height and width, this mount accommodates most front-loading VCRs, VCPs, and DVD players. Black. Qualifying Standard: Peerless.

KCDA No.	U/M	1-5	6+
29144	Ea	90.95	88.78

TRANSPARENCIES / ACETATE ROLLS

B) 3M Overhead Projector Acetate Roll

This acetate is a .005 mil gauge, the spool is 10-3/4" long and the acetate is 10-1/4" long. Fits 3M and most other brands. 3MAF4310, No Substitute.

KCDA No.	U/M	1-59	60+
29207	50 Ft	10.37	10.13

C) Overhead Projector Acetate Roll

This acetate is a .005 mil gauge, the spool is 10-3/4" long and the acetate is 10-1/4" long. Fits 3M and most other brands. Qualifying Standard: Generic.

KCDA No.	U/M	1-59	60+
29206	50 Ft	5.03	4.92

TRANSPARENCIES / COPIER

D) 3M Copier Transparency Film

8-1/2"x11", for use in plain paper copiers, 4 mil, clear, high temperature, universal film. 3M PP2950, No Substitute.

KCDA No.	U/M	1-49	50+
29603	100/Box	19.81	19.50

E) 3M Copier Transparency Film

8-1/2"x11", for almost all copiers. Clear, 4 mil, paper-backed, 3M PP2410, No Substitute.

KCDA No.	U/M	1-49	50+
29752	100/Box	19.16	18.86

F) 3M Highland Copier Transparency Film

8-1/2"x11", for copiers requiring a removable sensor strip, (Xerox 1075, 1035, 1045). Black image, clear background. 3M 903, No Substitute

KCDA No.	U/M	1-49	50+
29759	100/Box	8.89	8.75

G) 3M Highland Copier Transparency Film

8-1/2"x11", for most copiers not requiring a sensor strip. Clear, 4 mil, 3M 901, No Substitute.

KCDA No.	U/M	1-49	50+
29751	100/Box	7.84	7.71

H) Copier Transparencies

8-1/2" x 11", for use on plain paper copiers. Side bond paper-backed, 4 ml thick, Similar to KCDA No. 29752. Qualifying Standard: Precision Graphics.

KCDA No.	U/M	1-49	50+
29954	100/Box	12.58	12.38

I) Copier Transparencies

8-1/2"x11", for use on plain paper copiers. 1/2" removable sensing stripe, 4 ml, Similar to KCDA #29759. Precision Graphics 10-110, No Substitute.

KCDA No.	U/M	1-49	50+
29952	100/Box	10.34	10.18

J) Copier Transparencies

8-1/2"x11", for use on plain paper copiers. High-temperature, 29950 is similar to KCDA No. 29751, and 29951 is similar to KCDA No. 29603. Qualifying Standard: Precision Graphics.

KCDA No.	Thickness	U/M	1-49	50+
29950	4 mil	100/Box	8.42	8.29
29951	5 mil	100/Box	12.01	11.83

TRANSPARENCIES / INKJET PRINTER

K) Inkjet Printer Transparencies

8-1/2"x11", for use on inkjet printers, 3/8" removable top stripe, 4 ml, Similar to KCDA No. 29840. Precision Graphics 10-405, No Substitute.

KCDA No.	U/M	1-49	50+
29958	50/Box	11.94	11.75

L) Inkjet Printer Transparencies

8-1/2"x11", removable strip, clear. 3M Highland 707, No Substitute.

KCDA No.	U/M	1-49	50+
29840	50/Box	25.72	25.31



Don't See What You Need Here?

We can source it for you.

Contact KCDA customer service with the details at customerservice@kcda.org or 800-422-5019.



Visit www.kcda.org for the most current pricing and product information.

Prices in this catalog are subject to change without notice.



A) Inkjet Printer Transparencies

Quick-dry for inkjet printers. Dries in seconds, not minutes. Produces brilliant color images. Has removable sensing strip for smooth feeding. Apollo CG7033S, No Substitute.

KCDA No.	U/M	1-49	50+
29842	50/Box	17.78	17.50

TRANSPARENCIES / LASER PRINTER

B) 3M Laser Printer Transparency Film

4mil, 8-1/2"x11", clear laser printer film for most laser printers, high density black image. 3M CG3300, No Substitute.

KCDA No.	U/M	1-49	50+
29600	50/Box	19.65	19.34

C) Laser Printer Transparencies

4 mil, 8-1/2"x11", similar to KCDA No. 29600. Qualifying Standard: Precision Graphics.

KCDA No.	U/M	1-49	50+
29956	50/Box	5.53	5.44

TRANSPARENCIES / MULTIPURPOSE

D) 3M Multipurpose Transparency Film

8-1/2"x11". Clear, can be used with black and white copiers, laser and color ink jet printers. One side is coated for ink jet printers, the other for toner-based printers. The sensing strip tells you which side to use on your machine. 3M CG6000, No Substitute.

KCDA No.	U/M	1-49	50+
29750	50/Box	36.11	35.54

TRANSPARENCIES / THERMAL

E) Infrared Thermal Transparencies

4 mil, 8-1/2"x11", for use on infrared transparency makers, Similar to KCDA No. 29857. Precision Graphics 10-204, No Substitute.

KCDA No.	U/M	1-49	50+
29955	100/Box	29.30	28.84

TRIPOD

F) Video Tripod

Lightweight and easily portable. Extends from 21 inches to 56 inches. Two-way panhead. Maximum load 6-1/2 pounds. Qualifying Standard: Sony.

KCDA No.	U/M	1-2	3+
28993	Ea	33.46	32.65

TWO WAY RADIOS

NOTE: if you are planning on using your two-way radios mainly inside buildings, then UHF is likely the best solution for you. If you are mainly using your two-way radios for communication outside, then VHF would be a good choice.

G) Kenwood Pro Talk Two-Way Radio

2 watt output power, VHF operation, 151-159 MHz frequencies, 16 channels, LED light provides function information. Includes AC adapter, charging dock, rechargeable battery up to 17 hours, belt clip, antenna. 5-6 mile range. 1 year warranty. Kenwood TK-2300V16P, No Substitute.

KCDA No.	U/M	1
29266	Ea	184.21

H) Kenwood Protalk Two Way Radio

Two-way radio has 56 programmable frequencies UHF 1.5 watt 6 channel, 5-mile range, 18 hours battery life with Li-Ion battery. 2-year warranty. Kenwood TK-3230, No Substitute.

KCDA No.	U/M	1
29210	Ea	160.23

I) Kenwood Pro-Talk Two-Way Radio

UHF frequency, 461-470 MHz, 2 watt, 16 channel. Lithium battery offers 22 hour battery life. Coverage to 20 floors, up to 6 miles. Lightweight and durable, resistant to dust and water. Includes Lithium rechargeable battery pack, drop-in charger, AC charging adapter, belt clip. Kenwood TK-3300U16P, No Substitute.

KCDA No.	U/M	1
29233	Ea	190.75

J) Kenwood Pro-Talk Two-Way Radio

UHF frequency, 461-470 MHz, 2 watt, 4 channel. Lithium battery offers 22 hours battery life. Coverage to 20 floors, up to 6 miles. Lightweight and durable, resistant to dust and water. Includes Lithium rechargeable battery pack, drop-in charger, AC charging adapter, belt clip. Kenwood TK-3300U4P, No Substitute.

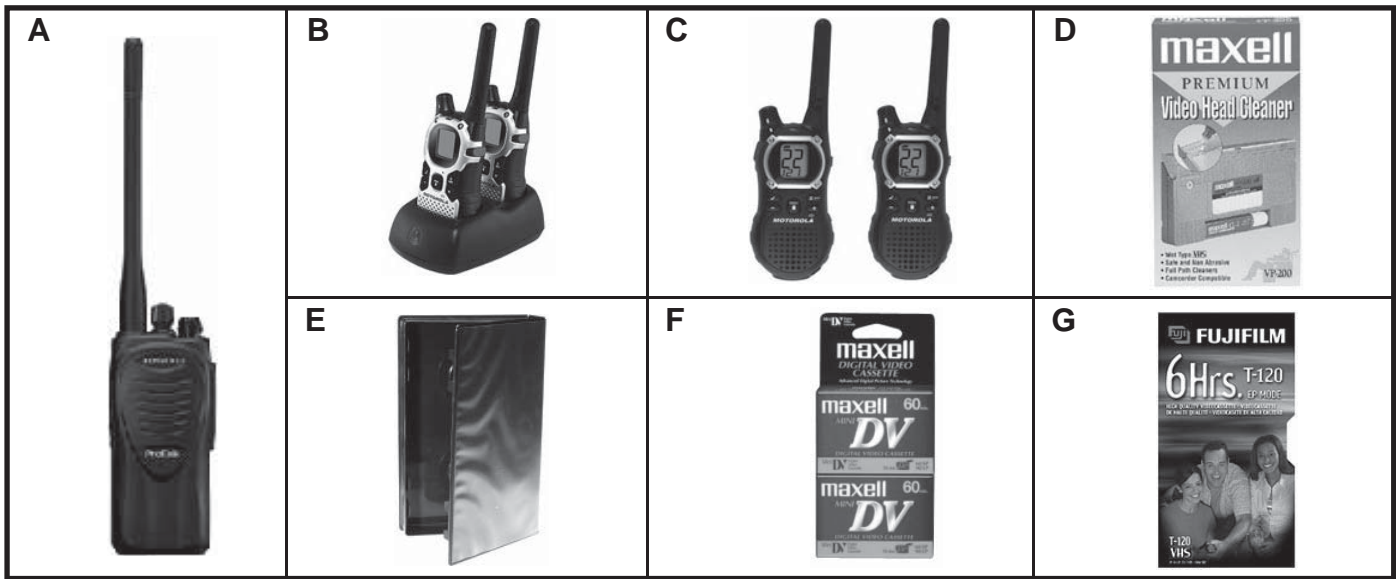
KCDA No.	U/M	1
29234	Ea	184.21



Don't See What You Need Here?

We can source it for you.

Contact KCDA customer service with the details at customerservice@kcda.org or 800-422-5019.



A) Kenwood Two-Way Radio

Made of die-cast chassis w/polycarbonate case, weather sealed construction, lithium-Ion battery, 151-159 MHz, VHF 2 watt 4 channel. Open areas without obstructions up to 6 miles. Residential areas near buildings up to 1.5 miles. 2 year limited warranty. Kenwood TK-2300V4P, No Substitute.

KCDA No.	U/M	1
29265	Ea	173.31

B) Motorola Two-Way Radio

With a possible range of 27 miles, emergency alert feature, and built-in LED flashlight. 7 NOAA channels with 22 frequency capacity and 121 privacy codes. Includes 2 radios, 2 belt clips, 1 dual charger and 2 NiMH rechargeable battery packs. Motorola MJ270R, No Substitute.

KCDA No.	U/M	1-5	6+
29223	Pkg	59.19	57.75

C) Two Way Radio, 20 Mile Range

Motorola Talkabout GMRS-FRS two-way radios has a possible 20 mile range, 22 channels with 121 privacy codes. Use either 3 AA batteries (Not included see KCDA No. 29652) or NiMH batteries (included). Emergency alert button, flashlight, LCD battery meter, mini-USB charging port. Includes, 2 EM1000R radios, 2 belt clips, 1 dual charger, 1 charging adapter and 2 NiMH rechargeable battery packs. Motorola EM1000R, No Substitute.

KCDA No.	U/M	1-11	12+
29231	Ea	47.93	47.17

VIDEO CASSETTE SUPPLIES

D) VHS Cassette Head Cleaner

Non-abrasive wet cleaning cassette. Cleans tape heads and entire tape path. Exclusive cleaning material prevents re-depositing of debris on heads. This cleaning tape is safe and effective for all types of VCRS. Maxell 290038, No Substitute.

KCDA No.	U/M	1-59	60+
29921	Ea	3.40	3.34

E) VHS Video Cassette Storage Case

Full sleeve, black plastic, hubless design, snaps tight. Qualifying Standard: Polyline.

KCDA No.	U/M	1-23	24+
29922	Ea	0.68	0.66

VIDEO CASSETTE TAPES

F) Maxell Mini DV Cassette Tape

MiniDV provides stunning video and razor sharp still images with all MiniDV camcorders. 60 minutes 2-pk. Maxell 298012, No Substitute.

KCDA No.	U/M	1-24	25+
29927	2/Pkg	5.78	5.69

G) VHS Tape

Designed for repeated record/erase cycles, this VHS video tape produces premium grade picture and sound quality. Great for recording in extended play modes. 6 hour record time in EP mode. Qualifying Standard: Fuji.

KCDA No.	U/M	1-35	36+
29920	Ea	1.33	1.30

WHITEBOARDS, INTERACTIVE

Bid 12-053 Interactive Technology

For the most current product information and pricing for this bid go to the KCDA website www.kcda.org, click on the Awarded Contracts tab on the left side navigation bar and then click on KCDA Contracts. If you click on or scroll down to Interactive Technology you will have access to the webpages for this bid.



Don't See What You Need Here?

We can source it for you.

Contact KCDA customer service with the details at customerservice@kcda.org or 800-422-5019.



Visit www.kcda.org for the most current pricing and product information.

Prices in this catalog are subject to change without notice.