



Member Newsletter

Spring 2022

Procurement Services That Save You Time and Money



Director's Corner

What's New at KCDA ...

Organizations like KCDA are constantly changing, growing, and evolving. Managing change requires an open mind and the ability to listen to your stakeholders. It calls for modifying your strategic goals to adapt to changes in your environment. It means embracing customer service and being forward thinking. Here are a few of the areas where change is happening at KCDA:

New People

- ***Purchasing Team:*** Karl Durham, Minsoon Bae, and Carmen Parker joined us last year to provide additional support in bid development, contract administration, and inventory control.
- ***Board of Directors:*** Stefanie McIrvin, Renton School Board and Tim Clark, Kent School Board were elected to the KCDA Board this year.

New Contracts

- Security Solutions: Awarded to Centegex
- Disaster Recovery Services: Awarded to ServiceMaster and Signal Restoration Services
- Mobile & Cellular Connectivity: Awarded to Kajeet, Inc.
- Health & Wellness: Awarded to Medicalshop, School Health, @ Tiny Eye Therapy
- Event Seating & Staging Solutions: Awarded to Trex
- HVAC & Mechanical Products: Awarded to Carrier

New Initiatives

- Installed Security Access Cameras
- Conducted IT Security Assessment
- Planted (25) New Trees

For more than 80 years, KCDA has been a leader in providing centralized procurement services to our member school districts. KCDA helps districts focus their resources in the classrooms by creating volume purchasing and fulfilling bid law requirements. KCDA operates as an extension of your purchasing department, governed by the basic laws and regulations that apply to all school districts in Washington. Every dollar spent using our contracts increases our purchasing power and helps us get lower pricing to our member districts. More importantly, you can be assured that our contracts are safe, legal, and compliant.

*Dave Mahalko
Executive Director*

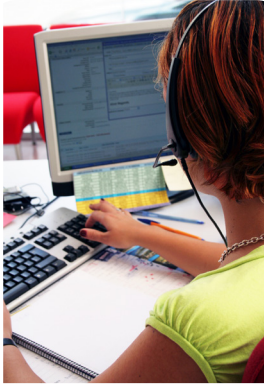
KCDA Spring Holiday



Memorial Day - Closed - May 30th



CUSTOMER SERVICE CORNER



Ordering Your 2022 School Supplies

We recommend getting your orders into KCDA as early as possible. The KCDA purchasing team bases its buying from your new orders and also from your previous years orders. Receiving your order helps to maintain sufficient inventory to cover the needs of every member. Not sure where to start? Try the “Reorder from History” option as described below.

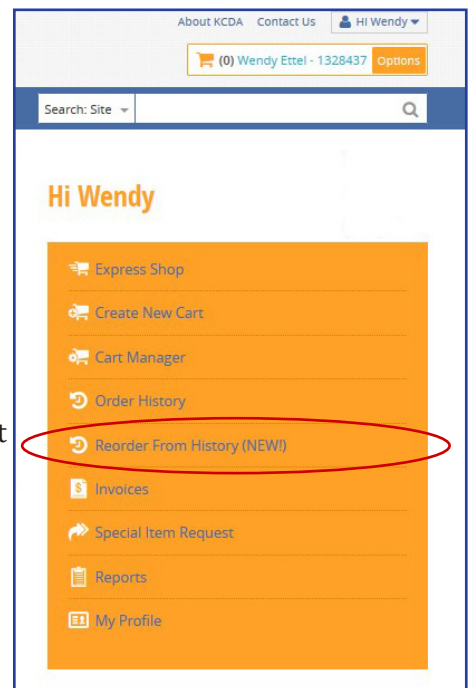
When placing your school start up order be certain to indicate when you want your orders delivered. August to mid September have the busiest delivery dates and tend fill up fast, requested delivery dates are on a first come first serve basis.

Reorder from History

Here are the instructions for the new KCDA “Reorder From History” button on the KCDA homepage. This feature allows you to create a cart from items you have previously ordered (for example; last year’s startup order). This feature is based on the Items Order Summary report which saves you from having to go through old carts or orders looking for a KCDA item # that you previously ordered. You can now create a cart and add items from this report.

1. Sign on to the KCDA website.
2. Click on “Reorder From History” in the menu > leave the report set on Items Order Summary Report.
3. Click the “Ship To” field and click in the box for your school or dept. Usually the school is the only one that shows. (close that menu to see the next field).
4. Click the “Status” field and click in the box for completed. (close that menu to see the next field).
5. To do a startup order, click previous on the “from” date to a date that would include your 19-20 startup order. You might go back to 4/1/2019 for instance. I usually select the current date for the “to” date.
6. Click “GO”. You will generate an alpha list of all items ordered during that time period complete with KCDA item numbers.
7. To select all items on the report, click in the box at the top of the list in the header and all line items will turn green. To select individual items, click the box for each line item you want and it will turn green. At the bottom of this alpha list, you will find one of two buttons. You will see an “Add Selected Items to Cart” if you already have an open cart. If there is no open cart, you will see “Create and Add All” to set up your cart. Clicking either “add” button will populate a cart (this may take a couple of minutes if your order is large). When the process is completed, you will see a lot of orange stripes that notify you of price changes. Ignore that and scroll to the top of the screen. Click on your cart in the field just to the left of the “Options” button.

You can now edit your cart by changing amounts & clicking update, hitting the red ‘X’ to delete items, adding account codes & clicking update, and add items by shopping.



CUSTOMER SERVICE CORNER

End of School Year Supplies

Parchment Certificate Paper 60#

Use this parchment paper to customize your own certificates in schools, office and general purpose applications. The paper offers a special and attractive look with a metallic blue border.

19504....8-1/2"x11" 100 Sheets \$14.80



Artificial Parchment Paper

This paper offers the look and feel of old world parchment with economy and performance of a modern day paper. Great for award, honor and graduation certificates. 8-1/2"x11".

*Recycled content, other colors available, Antique Gold, Blue, Gray, Green, Natural Cream, Olde White and Pink.

77938....Aged 65#... 250/Pkg ... \$12.92

14180* ..Aged 60#500/Ream ... \$13.05



Document Frame

This photo frame is black with a gold accent line and a clear plastic face. 8-1/2"x11".

19503....Each \$2.36



Certificate Frames

Leatherette with gold trim, holds 8-1/2"x11" documents, use horizontally/vertically, features free standing easel.

19507....Black..... 2/Pkg\$8.43

19505....Burgundy 2/Pkg ..\$12.81



Certificate/Document Covers

The perfect way to hold and frame precious documents and certificates. Premium 80#. linen textured cover stock with elegant gold-foil design adds a touch of elegance to any important paper.

19524....Blue 6/Pkg ..\$11.26



Open End Thumb Cut Report Card Envelope

6"x9", 28# manila.

12865....100/Pkg Call for Pricing



Kraft Envelopes, Clear-Clasp Envelope

Redi-Tac, 6"x9" 28#,

12949....100/Box \$12.60



Bankers Box File Storage

Fast fold one step setup makes box assembly fast and easy.

Reinforced hand holes resist tearing and make the box comfortable to carry. Built for heavy daily usage and maximum stackability.

97143....10"x12"x15" Each\$3.89

Moving Storage Boxes

All boxes meet a minimum 200# test.

Multiple sizes available.

00019....24"x18"x18" Each \$3.39

00057....12-1/4"x9-1/4"x6-1/4" Each \$.78

00035....18-1/2"x12-1/2"x12-1/2" Each \$1.43



File 'n Save Bulletin Board Storage Box

This is the best way to organize, store, and protect your bulletin board sets, classroom decor, and more for years of use. 27-3/4"x19"x7-1/4".

18665....Each \$9.76



Surtable Box Packing Tape

Ideal for sealing medium weight cartons. Clear, 3" core.

00166....2"x110 yds \$1.83 Roll

00156....2"x55 yds \$1.20 Roll



Palletote Box/Lid

Long term storage use. Crack resistant injection molding for uniform strength and thickness, gray plastic.

35111Box \$36.88

35113....Lid..... \$17.49



Poly Bubble Wrap

12" wide, 1/2" bubbles.

00008....250'/Roll..... \$29.54



All Purpose Labels

White, removable.

93160....2"x4" 120/Box \$1.47



Complete Floor Finish Concrete/Masonry

A durable finish that reduces the need to strip and refinish.

31634....5 Gallon \$82.95



Vectra Floor Finish, Concrete/Masonry

Provides diamond-like brilliance, clarity and durability.

31639....5 Gallon \$91.75



Envior Care Disinfectant Cleaner

A nontoxic, neutral, non-alkaline disinfectant.

31718....Gallon \$16.07



GLS Aerosol Glass Window Cleaner

Also works on tiel and chrome. 18 oz. can.

3811712/Case \$58.51



CUSTOMER SERVICE CORNER

End of School Year Supplies, continued

Foam Brushes

They are made with high-density foam pads and solid wood handles.

30501....1".....	Each	\$.33
30502....2".....	Each	\$.40
30503....3".....	Each	\$.47
30504....Assorted	48/Set	\$47.85



Paint Tray

The wide surface easily accommodates paint rollers and brushes.

30619....Metal.....	Each	\$5.23
30618....Plastic.....	Each	\$2.02



Original EZ Reacher

Trash picker, stainless steel fingers and strong aluminum shaft. 35" long.

39344....Each	\$11.81
---------------------	---------



Paint Brushes, Throw Away

Natural Bristle, wood handle.

30505....1/2".....	Each	\$.52
30506....1".....	Each	\$.60
30507....1-1/2".....	Each	\$.69
30508....2".....	Each	\$.77



Window Squeegee

12" rubber blade with channel.

34508....Each	\$5.39
---------------------	--------



Paint Roller with 3 Covers

General purpose paint roller with covers. Package includes 1 paint roller with handle and 3 covers, 9" with 3/8" nap, 100% pure polyester.

30591....Pkg	\$5.92
--------------------	--------



Stanley Utility Knife

Retractable medium duty utility knife, 6-1/8"

87212....Each	\$3.50
---------------------	--------



Stanley Utility Knife Blades

Heavy duty for general purpose cutting.

87213....5/Pkg	\$1.02
----------------------	--------



Plastic Paint Tray Liner

Fits standard paint trays.

30620....Each	\$.97
---------------------	--------



KCDA Free Calendar

This calendar features 2 sides; a full year for January to December 2022 and split year September 2022 through August 2023.

Calendars are available by contacting KCDA customer service 800-422-5019, customerservice@kcda.org or add to your website order using "KCDA Calendar" as the order number. Available while supplies last.



Order Your Furniture Early!

If you have new furniture projects for the upcoming year, please allow plenty of time for delivery. KCDA does not stock furniture in our warehouse. All furniture is shipped directly to you from our various vendors.

Normal shipping turnaround is about 6-8 weeks. During May to September, that time could be as much as 14 weeks. This is the busy time for our vendors.

Ordering early will allow time for your order to be processed and shipped, thus minimizing any delay for your projects. If you have any questions please contact customer service at 800-422-5019.



KCDA'S NEWEST PRODUCTS

Adult Face Shield with Drape

Personal protection, adult full-face shield with drape.
Disposable.

51171....100/Case \$356.50



Air Sick Bags

White opaque, latex free for vomit and urine disposal, automatic inner seal prevents leaking and spills. Automatic super seal valve closure prevents leaking or spilling. Extra wide rigid collar allows for easy, one hand use. Packed in individual envelopes.

50073....Ea \$1.88



Lakeshore Learning Write and Wipe Lap Whiteboard

Write or draw on this whiteboard, then simply wipe clean without a trace! Board is the perfect size for children and sturdy enough to use right on their laps. Unruled blank, frame-less. 9"x12", single sided, frame-less.

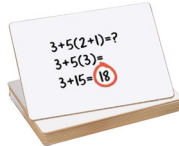
43002....10/Set \$42.54



Lap Whiteboard

This personal size whiteboard is ideal for classroom, home, and travel. Unruled blank. Great for drawing and games, math and writing practice. Wipes clean with soft cloth (not included). 9"x12", frame-less.

43526....10/Set \$15.88



Samsill View Ring Binders

Using view binders is a great way to customize subjects for easy identification. These binders feature clear overlay pockets and 3 rings on the back cover for ease for easy page flipping.

95495....White 1" - Round Ring ... \$1.78



Canon Printer Cartridge, PG-245

Inkjet Ink – Standard Yield

Compatible Canon Models:

- PIXMA iP2820,
- MG2420, MG2520, MG2522, MG2525, MG2920, MG2922, MG2924, MG3020, MG3029,
- MX490, MX492,
- TR4520,
- TS202, TS302, TS3120.

75557....Black..... \$18.90



Ricoh Printer Cartridges, Type 145

Color Laserjet Toner – Standard Yield

Compatible Ricoh Models:

Aficio SP: C411DN, C420DN-KP, C420DN, C410DN-KP, C410DN.
Aficio: CL4000DN.

65012....Black..... \$80.80

65015....Cyan \$218.84

65014....Magenta..... \$148.50

65013.... Yellow \$218.84



HP Printer Cartridge, HP 64X

Laserjet Toner – High Yield

Compatible HP Models:

- LaserJet: P4015dn, P4015n, P4015tn, P4015x, P4515n, P4515tn, P4515x.

Not compatible with HP Models:

- Laserjet P4014, P4014dn, P4014n.

99074....Black..... \$220.10



HP Printer Cartridge, HP 952

Inkjet Ink – Standard Yield

Compatible HP Models:

- OfficeJet Pro 7720, 7730, 7740, 8210, 8216, 8702, 8710, 8715, 8720, 8725, 8730, 8740.

63947....Tricolor..... \$60.21



HP Printer Cartridge, HP 656X

Laserjet Toner – High Yield

Compatible HP Models:

- Laserjet Enterprise: M653dn, M652n, M653dh, M653x, M652dn.

75479....Black..... \$291.87



HP Printer Cartridges, HP 202X

Laserjet Toner – High Yield

Compatible HP Models:

- Color LaserJet Pro MFP: M281fdw.
- Color LaserJet Pro: M254dw.

75481....Tricolor..... \$245.70



HP Printer Cartridges, HP 655A

Laserjet Toner – Standard Yield

Compatible HP Models:

- Color LaserJet Enterprise
- M652n, M653dh, M653x, M653dn, M652dn.
- Flow MFP: M682z, M681z, M681f.
- MFP: M681f, MFP M681dh.

75475....Cyan \$228.15

75477....Magenta \$228.15

75476....Yellow \$228.15



HP Printer Cartridges, HP 508X

Laserjet Toner – High Yield

Compatible HP Models:

- Color LaserJet Enterprise:
- M553n, M553dn, M553x, M553dh.
- Flow MFP: M577z.
- MFP: M577dn, M577f.

75011....Cyan \$213.79

75012....Yellow \$213.79



Washington prices listed include delivery.
Delivered prices to the San Juan Islands and other states may be slightly higher. For all current pricing please visit www.kcda.org.
All KCDA prices are subject to change without notice.

KCDA'S NEWEST PRODUCTS

Bostitch inPower Desktop Stapler

You can count on consistent stapling using this spring-powered desktop stapler. The lightweight design has nonslip grip and base to allow comfortable handling whether stapling with one finger, the palm of your hand or open for bulletin board tacking, while the jam-free mechanism delivers smooth stapling performance. This stapler features an integrated staple remover to allow quick fixes, with a staple storage compartment in the base to keep extra staples on hand for immediate reloading. The die-cast metal housing delivers long-lasting performance while nonslip base provides stability and tabletop protection. Staples up to 28 sheets of paper, using full-strip standard (210) staples.



26834....Ea \$11.12

Alphabet Book Style Filing Sorter

Make it easy to find important paperwork with this desk file. The 20 dividers feature alphabetically labeled tabs, so you can arrange documents alphabetically for quick reference. An expandable design accommodates thick stacks of paper for a flexible filing solution.



95113....Ea \$9.15

Bar Style Filing Sorter

Prepare paperwork for efficient filing with this pressboard sorter. Each of the 31 leaves features a preprinted tab, so you can quickly flip through to find the section you need. Featuring markings for day, date, month, letter, and number mean you can use this sorter for all types of paperwork. Made with durable pressboard construction.



95102....Ea \$17.73

Prepared Mustard

Yellow prepared mustard. 105 ounce.

46101....4/Case \$25.19



Foil Sheets

Food wrap cushion-fold sheets, laminated, blue check, 10-1/2"x13".

49537....2000/Case \$115.49



Compostable Forks, Knives and Spoons

These eating utensils are made up of PLA compostable material. This cutlery has a 200-degree Fahrenheit heat tolerance, except the taster spoon KCDA No. 49936. BPI compostable compliant.

49937....Forks..... 1000/Case \$81.31



Rubbermaid Utility Carts

This is a heavy-duty cart with 2 lipped shelves, 5" swivel casters and an ergonomic push handle for optimum hand placement and better control. 500-pound capacity. Approximately 45"x26"x33" high.

36035....Ea Black.\$171.07



Duracell Silver Oxide Button Batteries

These silver oxide, button cell batteries provide reliable, long-lasting power for your medical devices, watches, toys, electronics and more.

29531....Ea 303/357...\$84



Duracell Lithium Button Batteries

Reliable and efficient power for devices like key fobs, remote controls, thermometers, and many others with long-lasting power. Lithium button cell batteries.

29529....Ea 2032.....\$93



Duracell Coppertop Alkaline Batteries

All-Purpose batteries are not only dependable, they're also long-lasting.

29530....6 Volt..... Each\$8.33



Aquarelle Paint Brushes

Gold synthetic nylon for printing large areas, washes, and backgrounds, can create fine lines, nickel ferrule, short handle.

84370....050..... Each\$1.97



Agility Speed Ladder

This versatile speed ladder features 12 adjustable slots that provides for a variety of drills. Used to improve agility, coordination, foot agility, foot speed and balance. Vary the position of the ladder to work linear and lateral movements and change of direction drills.

61151....20'x20' Each ...\$32.81



VL-Lite Potter's Wheel

Designed with the potter in mind, the VL-Lite is a belt-driven lightweight wheel. "Lite" enough to carry yet sturdy enough to throw on. Featuring a remote pedal, two-piece splash-pan, workspace, 100-watt reversible motor, an automatic belt-tension system.

85976....Ea \$943.00



Washington prices listed include delivery. Delivered prices to the San Juan Islands and other States may be slightly higher.

For all current pricing, please visit www.kcda.org.
All KCDA prices are subject to change without notice.

KCDA'S NEWEST PRODUCTS

VL-Whisper Potter Wheel

The superior technology of Shimpo's RK-Whisper potter's wheel and the popular features of Shimpo's Velocity V75 potter's wheel have been combined to create the second model in Shimpo's Whisper series potter's wheels: the VL-Whisper. Responsive, high torque at all speeds, powerful and we can now say the quietest wheel in the potter's wheel market. It's a "quiet" that must be heard to be believed.

85977....Ea \$1,610.00



R-K Whisper Potter's Wheel

The RK-Whisper represents the next generation of potter's wheels. Responsive, high torque at all speeds, powerful and quiet. Not just quiet, but QUIET! This wheel is by far the quietest on the market; you can throw and hear yourself think at the same time. The exterior of the RK-Whisper resembles the RK-10, but that's where the similarities end. This new wheel features a brushless DC motor and direct drive (no belt) system. The motor is electronically controlled and operated by a fixed foot pedal and hand lever. It's reversible, and the steel body is durable under all conditions. A 12" wheel-head and two-piece splash-pan are included as standard features.

85995....Ea \$1,472.00



Washington prices listed include delivery. Delivered prices to the San Juan Islands and other states may be slightly higher. For all current pricing please visit www.kcda.org. All KCDA prices are subject to change without notice.

KCDA'S NEW AND UPDATED CONTRACTS

For more than 80 years, KCDA has been a leader in providing centralized procurement services. Every dollar spent using our contracts increases our purchasing power and helps us get lower pricing. We are governed by the basic laws and regulations that apply to our members so you can be assured that our contracts are safe, legal, and compliant.

Contracts Awarded in December 2021, January and February 2022

Art Brushes, Bid 22-152

AV Equipment & Supplies, Bid 22-050

Ceramic Supplies, Bid 22-160

Classroom Aids, Bid 22-015

Commercial Kitchen Equipment, Bid 21-040

Copiers, AEPA 021-C

Custodial Products, Bid 22-060

Digital Display Solutions, AEPA 020-F

Digital Resources & Instructional Materials, AEPA 020-C

Event Seating and Staging Solutions, Bid AEPA 022-F

Facility Management Software, AEPA 020-D

First Aid Supplies, Bid 22-110

Food Staples and Canned Goods, Bid 20-080

General Furniture, Bid 22-130A

Health and Wellness, Bid AEPA 022-B

Hon Furniture, Bid 21-134

HVAC & Mechanical Product & Solutions, AEPA 021-75

HVAC and Mechanical Products & Solutions, Bid AEPA 21.75

HVAC Building Systems, Bid 18-270

Integrated Systems and Critical Communications, Bid 22-405

Lawn & Groundskeeping Equipment, AEPA 020-E

LED Lighting, Bid AEPA 022-E

Library Supplies, Bid 22-020

Multi-Purpose Copy Paper - White Only, Bid 22-019

Natural & Synthetic Surfaces, Bid 020-A

Paper Supplies/Reference Resources, Bid 22-010

PE Equipment & Supplies, Bid 22-120

Promotional Items, Bid 22-145

Roofing & Related Services, AEPA 021-D

School & Instructional Supplies, AEPA 019-E

Security Solutions, AEPA 021-G

Security Solutions, Bid AEPA 21G

Technology Catalog, Bid AEPA 022-G

Vehicles, AEPA 020-G

Virco Furniture, Bid 21-134

Whiteboards & Display Cases, Bid 22-131

FROM OUR MARKETING DEPARTMENT



KCDA Recognizes our Top Vendor-Partners for 2021!

2021 was a record year for KCDA and much of our success was due to the efforts of our “Direct Ship” vendor-partners who encouraged their school district and other public agency customers to utilize KCDA contracts. As a “Thank You” to these vendor-partners KCDA has awarded our Top 5 vendor-partners customized recognition plaques acknowledging their outstanding contribution to our associations overall success during 2021.

KCDA’s Top 5 Vendor-Partners for 2021 include:

Pacific Mobile Structures	Modular Buildings
Saxton Bradley	Furniture and Interactive Technology
Field Turf	Artificial Turf and Track Surfaces
WTI - Tremco	Roofing Services
Musco	Exterior Lighting Systems



In addition to these top vendor-partners KCDA also recognized AllPlay Systems as our fastest growing Vendor-Partner during 2021!



KCDA’s strong partnerships with these outstanding vendor-partners continues to build our association’s success serving the needs of K-12 schools and other public agencies throughout the Pacific Northwest and Alaska.

*Dane Hewitt
Director of Marketing*

FROM OUR PURCHASING DEPARTMENT



2022 1st Quarter Bid Contract Awards

KCDA Purchasing manages 90 contract categories through competitive formal bid.

We do our due diligence in evaluating vendor proposals based upon scorecard system and selecting the lowest responsible bidder. All these activities are compliant with RCWs and State regulations so our members can utilize KCDA contract without their own bid process which takes much time and cost.

KCDA contracts cover various types of school supplies, COVID PPE items, and public work capital project, and in the 1st Quarter 2022, we've awarded total 33 bids. Some of them are

- #22-060, Custodial Supplies
- #18-270, HVAC Building Systems
- #22-152, Art Brushes
- #21-040, Commercial Kitchen Systems
- #22-120, Physical Education Equipment & Supplies
- #22-110, First Aid Supplies
- #21-116, Patient Care Equipment
- #21-356, Commercial Fitness Equipment
- #22-145, Promotional Items

KCDA also awarded AEPA (Association of Educational Purchasing Agencies) contracts such as

- #AEPA 020A, Natural & Synthetic Surfaces
- #AEPA 020D, Facility Management Software
- #AEPA 021D, Roofing & Building Envelope Services
- #AEPA 021G, Security Solutions
- #AEPA 022B, Health & Wellness
- #AEPA 022F, Event Seating & Staging Solutions

We will continue to strive to develop new contract categories in order to catch up evolving technologies in the industry.

On the other hand, KCDA Purchasing has experienced unprecedented supply chain issue last year and we are expecting that this will continue in 2022.

To remedy the situation, KCDA ensures to source high quality product with short lead time since we understand that this is important for our school district.

Spring season begins soon and we are excited about working with school staffs and buyers again. You can reach out to KCDA anytime should you have any questions/suggestions.

*Thomas Kim
Director of Purchasing*

STAFF DIRECTORY

Administrative

David Mahalko, Executive Director
dmahalko@kcda.orgext. 161

Yohan Lee, Chief Financial Officer
ylee@kcda.orgext. 110

Riesa Ragan, Director of Human Resources
rragan@kcda.orgext. 126

Shalena Putnam, Accounting Specialist
sputnam@kcda.orgext. 112

Tracie Keller, Accounting Supervisor
tkeller@kcda.orgext. 139

Stephanie Carson, Accounts Payable
scarson@kcda.orgext. 115

Van Nguyen, Accounts Receivable
tnguyen@kcda.orgext. 163

Karen Robertson, General Accounting Assistant
krobertson@kcda.orgExt. 114

Customer Service

Dane Hewitt, Director of Marketing
dhewitt@kcda.orgext. 117

Customer Service
Pennie Britz, Lead
pbritz@kcda.orgext. 120

Etta Smith-Rice
esmith-rice@kcda.orgext. 148

Pauline Peterson
ppeterson@kcda.orgext. 128

Lima Lotoa
tlotoa@kcda.orgext. 118

Wendy Ettel, Website Designer
wettel@kcda.orgext. 146

Randi Michie, Digital Marketing Specialist
rmichie@kcda.orgext. 152

Field Representatives

Ryan Burge
rburge@kcda.orgext. 151
Representing Counties: Adams, Asotin, Columbia, Franklin, Garfield, Island, Kitsap, S. King, Pierce, San Juan, Skagit, N. Snohomish, Thurston, Walla Walla, Whatcom, Whitman, Yakima.
Representing School Districts: Auburn, Enumclaw, Tahoma.

Customer Service

Kevin Hedeon
khedeon@kcda.orgext. 137
Representing Counties: Chelan, Douglas, Ferry, Grant, Kittitas, Lincoln, N. King, Okanogan, Pend Oreille, S. Snohomish, Spokane, Stevens.
Representing School Districts: Bellevue, Edmonds, Everett, Federal Way, Highline, Issaquah, Kent, Lake Washington, Mukilteo, Northshore, Renton, Riverview, Seattle, Shoreline, Snoqualmie Valley.

Mike Rebitzke
mrebitzke@kcda.orgext. 162
Representing Counties: Clallam, Clark, Clowitz, Grays Harbor, Jefferson, Klickitat, Lewis, Mason, Pacific, Skamania, Wahkiakum.
Representing States: Alaska, Idaho, Oregon.

Purchasing

Thomas Kim, Director of Purchasing
tkim@kcda.orgext. 143
LED Lighting Solutions, Portable Air Purifiers, School & Instructional Supplies, Vehicles.

Contract & Procurement Specialists

Rita Alford
ralford@kcda.orgext. 119
Carpet & Specialty Flooring, Furniture - Artco Bell/General/HON/Virco, Musical Instruments, Whiteboards & Display Cases,

Valerie Buckbee
vbuckbee@kcda.orgext. 134
Custodial Supplies - Plastic Can Liners, Digital Display Solutions, Disaster Recovery, Early Childhood Supplies and Furniture, Field Lighting, First Aid Supplies, Maintenance Machines, Modular Athletic Field Protection, Natural & Synthetic Turf Surfaces, Sport Field Drainage and Irrigation Sprinkler Systems.

Karl Durham
kdurham@kcda.orgext. 131
Auditorium Seating, Bleachers, General Office Classroom Supplies - Binders/Binder Indexes/Markers/Tapes & Adhesives/Writing Instruments, HVAC Building Systems, Integrated Security Systems & Fire Controls, Lockers, Promotional Items, Roofing & Related Services, Security Solutions.

Julie Harris
jharris@kcda.orgext. 116
ADA/IBC Compliant Maintenance Ramps & Steps, Calculators, Ceramic Supplies, Commercial Kitchen Equipment, Copiers/MDF's, Custom Printed Materials, Food Staples and Canned Goods, HVAC Maintenance, Library Supplies, Lunchroom Supplies & Equipment, Plumbing Supplies.

Purchasing

Janice Lee
janice.lee@kcda.orgext. 141
Athletic Apparel - Uniforms & Accessories, Calendars, Commercial Fitness Equipment, Computer and Technology Catalog, Crayola Art & Craft Supplies, Critical Communications Systems, Facility Management Software, Interactive Technology, Mobile Cellular Connectivity, Physical Education Equipment & Supplies, Science Equipment & Supplies, Telephone Communications Systems.

Karri Wyman
kwyman@kcda.orgExt. 133
Art Brushes, Art & Craft Supplies, AV Equipment & Supplies, Bus Stop Arm Cameras, Career & Technical Education, Digital Bus Security, Digital Resources, Landscaping & Grounds Equipment, Patient Care Equipment, Portable Classrooms/Modulars, Playground Equipment & Matting, Restroom, Playground & Recreational Structures.

Debbie Day, Senior Buyer
dday@kcda.orgext. 130
Supports: Custodial, General Supplies
Responsibilities: Inventory Item Maintenance, Inventory Management Support, Purchasing for Strategic Departments and Training.

Minsoon Bae, Purchasing Specialist
mbae@kcda.orgext. 129
Classroom Aids, HVAC Air Filters, Construction Paper, Multipurpose Copy Paper - White only, Paper Supplies/Dated Materials/Reference Resources, Printing Paper- Colors & Specialty, Duplicating Supplies/Ink & Toner Cartridges.

Carmen Parker, Inventory & Purchasing Assistant
cparker@kcda.orgext. 149
Orders and Supports Arts & Crafts

Information Services

Computer Operator/Programmers
Bert Piedlow, IT Systems Administrator
bpiedlow@kcda.orgext. 136

Dustin Lohse, Network Administrator
dlohse@kcda.orgext. 113

Warehouse

Barry Fredericks, Manager
bfredericks@kcda.orgext. 154

Tony Apodaca, Assistant Manager
tapodaca@kcda.orgext. 121

