



Member Newsletter

Winter 2021

Procurement Services That Save You Time and Money



Director's Corner

Looking ahead to 2022 ...

Despite the COVID pandemic that caused major disruptions to our business, KCDA still added four new contract categories, awarded a roofing contract, installed a keyless entry, conducted an IT security assessment, improved website speed, revised our sick leave policy, and planted 25 new trees. Looking ahead to 2022, we expect to see rising prices and continued supply chain pressures. Limited product availability will force schools to order earlier and to seek alternative sources. Lower student enrollment will mean less education funding and reduced demand for consumables. Construction spending will slow as fewer school districts have passed bonds and levies. Given this uncertain business environment, KCDA will focus on improving inventory turnover, reducing costs, and lowering employee turnover.

On the warehouse side, our key initiatives will include implementing a new pricing tier for E. Washington, encouraging members to pre-order, and measuring inventory turns. Other initiatives will include adding new conveyor equipment, installing new security cameras, and expanding our social media presence.

On the contract side, we will evaluate new bid opportunities including parking lot repair, storage sheds, fixed permanent signage, and moveable wall systems. We will collaborate with our vendor partners to drive contract sales. We will work with Perkins Coie to ensure that our bid language and terms comply with recent statutory changes. We will foster relationships with the capital projects and architectural community to identify new bid categories. Finally, we will ensure that our members continue to have access to the best contracts available for modular buildings, furniture, roofing, flooring, playground equipment synthetic turf, field lighting, and office supplies.

For more than 80 years, KCDA has been a leader in providing centralized procurement services to our member school districts. KCDA helps districts focus their resources in the classrooms by creating volume purchasing and fulfilling bid law requirements. KCDA operates as an extension of your purchasing department, governed by the basic laws and regulations that apply to all school districts in Washington. Every dollar spent using our contracts increases our purchasing power and helps us get lower pricing to our member districts. More importantly, you can be assured that our contracts are safe, legal, and compliant.

*Dave Mahalko
Executive Director*

KCDA Winter Holidays



Christmas - December 24 & 27 - Closed

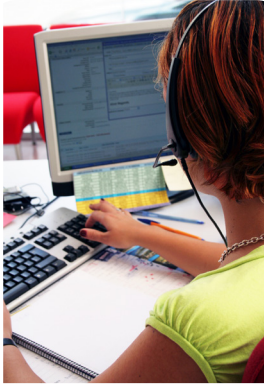
New Years - December 30 - Closed at 12:00pm, December 31 - Closed

Martin Luther King Jr Day - January 17 - Closed

President's Day - February 21 - Closed



CUSTOMER SERVICE CORNER



KCDA Special Item Request

Looking for a product that is not on our website? Our purchasing team is ready to source your request from one of our hundreds of vendors.

The screenshot shows the KCDA website header with the logo and tagline 'Procurement Services That Save You Time and Money'. The navigation bar includes 'SHOP', 'HOW TO ORDER', 'CONTRACTS & BIDS', 'RESOURCES', and 'MEMBERSHIP'. The 'HOW TO ORDER' dropdown menu is open, showing options: 'Ordering From KCDA', 'Order Forms', 'School Start up Delivery Request', 'Special Request Form' (highlighted), and 'Questions About My Order'. A text box on the right states: 'The Special Request Form is located in the How to Order tab and it can be accessed after you login into our website.'

Complete the form with your contact information.

Special Item

Complete this form for more information

| = Required

Customer Contact Info

Full Name

Wendy Ettel

Email

wendyettel@kcda.org

Phone

425-251-8115 ext. 146

Give us the details of the product you would like sourced from us.

Customer Request Info

KCDA SKU

KCDA SKU

Manufacturer Name

Vari Active Seat

Manufacturer Part #

B08F7ZQWNB

Quantity Needed

15

Manufacturer Website

<https://www.vari.com/active-seat/ST-ACTV.html>

CUSTOMER SERVICE CORNER

KCDA Special Item Request, Continued

Manufacturer Contact Info

Manufacturer Contact Info

Detailed Item Description

The Active Seat delivers an upscale touch, with a durable polypropylene seat pan that flexes to support a comfortable foam cushion. Designed to engage your leg, back, and core muscles when sitting or leaning, it helps add more movement to your day. A low seat back profile means better posture. With its articulating pedestal and ability to raise to up to 35", you can rock or stretch throughout the day. Black. Seat Height 25-1/2"35". Seat 17" Wide x 13-3/4" Deep.

Include specific info like color, size etc and a hyperlink to item, if available.

Send us an image using the "+ upload image file or document" feature.
Click the link and a dialog box will open.

- Upload image file or document

This feature will allow you to drop and drag an image using your browser or a website *Firefox users need to drop and drag the image to your desktop first then drop and drag onto the form.

You can also browse your files to add a document or an image.

Drag & Drop File Here

or

Click to browse files

#1 - vari-active_400767_iso.jpg

Status: Upload Complete!

Finish the form with the dates needed and frequency use, click submit.

Date Quote Needed

12/17/2021



Date Product Needed

01/14/2022

Projected Purchasing Frequency

As needed for Office and Classrooms

Submit

You will receive confirmation from KCDA and we will contact you with the details on your request.

Home | How To Order

HOW TO ORDER

Ordering From KCDA
Order Forms
School Start up Delivery Request
Special Request Form
Questions About My Order

Thank You

Thank you for contacting us. We will be in touch with you as soon as possible.

KCDA'S NEWEST PRODUCTS

Econosource Multi-Purpose Copy Paper

White, 20#, 92 Bright, 3 hole punched.
17788....500/Ream..... \$4.64



Sharpie Retractable S-Gel Pens

High-performance gel pen with no smear, no bleed technology. Bold colors for vivid writing, contoured rubber grip.

25578....Blue	Fine 0.5 pt	4/pkg	\$6.47
25576....Black	Fine 0.5 pt	4/Pkg	\$6.47
25577....Black, Blue, Red	Fine 0.5 pt	4/Pkg	\$6.47
25573....Red	Med 0.7mm pt	2/pkg	\$3.31
25574....Black	Med 0.7mm pt	2/pkg	\$3.77
25575....Blue	Med 0.7mm pt	2/pkg	\$3.32
25572....Black, Blue, Red	Med 0.7mm pt	4/Pkg	\$6.47



Powerhouse Electric Pencil Sharpener

Break-resistant sharpening action, heavy duty, fly-away cutters, shavings bin, safe start electric motor blade locking. Compatible with color pencils.
99572 Each \$29.57



School Pro Electric Pencil Sharpener

Break-resistant sharpening action, heavy duty, fly-away cutters, shaving bin, safe start electric motor blade locking. Manual-adjust, six-size-dial, with clearly labeled size indicators. Compatible with color pencils.

99573....Each \$40.23



ProX Quiet Pro Electric Pencil

Ultra-quiet with a break-resistant sharpening action. Smart stop prevents over-sharpening. Auto-adjust dial seamlessly accommodates nearly any pencil size. Compatible with colored pencils

99574....Each \$71.89



Foil Sheets

Food wrap, aluminum cushion foil sheets, laminated printed red pattern, 10.5"x13". 500 sheets/box.
49536....2,000/Case \$123.46



Dry Wax Patty Papers

Moisture resistant and easy release.
White. 5-1/2"x5-1/2".

47367....1000/Box \$4.59



Folded Paper Towel Dispenser

Manual dispenses C-fold and multi-fold paper towels includes lock and key. Stainless steel. Wall mount.

35002....Ea \$60.00



White Butcher Paper

Heavy weight, 18"x1,100' roll.
17511..... \$39.83



Alkaline Batteries

9-volt alkaline batteries.
29617.... 2/Pkg \$5.85



Duracell AAAA Batteries

The Duracell 1.5 Volt specialty alkaline battery is designed for use in household items like electronics, glucose and blood monitors, cameras, and more.

29586....AAAA 2/pkg \$1.69



Duracell Coppertop Alkaline Batteries

All-Purpose batteries are not only dependable, they're also long-lasting. For use in remote controls, flashlights, calculators, clocks, radios, wireless mice, keyboards and more.

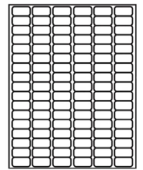
29584....AA	12/Pkg	\$7.30
29585....AAA	12/Pkg	\$7.76
29587....D	4/Pkg	\$5.83
29588....C	8/Pkg	\$10.48



Spine Labels

Paper spine labels, 5/8"x1-1/4", white, 50#, permanent pressure sensitive adhesive, copiers, laser and inkjet printer compatible.

19933....10,200/Pkg \$35.57



Mini Hot Glue Gun

Electric, low temperature.
82524....Each \$5.39



Mini Multi-Temp Glue Sticks

Round, multi-temperature melt, low, high and dual, .28"x4" long.
82525....30/Pkg \$5.12



Classic Art Markers

Classic formula ink provides the brightest color, AP certified, non-toxic.

25501....Bullet Tip	8 Assorted/Set	\$1.68
25503....Bullet Tip	12 Assorted/Set	\$2.56



Prang Regular Crayons

Regular size non-toxic soybean blend crayons.

25504....16 Assorted	12/Boxes	\$7.51
25505....8 Assorted	12/Boxes	\$4.17



Washington prices listed include delivery.
Delivered prices to the San Juan Islands and other states may be slightly higher. For all current pricing please visit www.kcda.org.
All KCDA prices are subject to change without notice.

KCDA'S NEWEST PRODUCTS

Washable Watercolor Set

16 watercolor set, oval shaped pan, with brush.
25502....Ea \$2.67



Prang Classic Liquid Tempera Paint

This paint is ready-to-use, non-settling formula, smooth laydown bold, vibrant colors. AP certified, non-toxic.

25518....Red Quart.....\$2.22
25519....Turquoise Blue Quart.....\$2.22
25520....White Quart.....\$2.22
25517....Yellow Quart.....\$2.22



Prang Washable Liquid Tempera Paint

This ready-to-use washable paints formula easily washes off skin and most clothing while providing bold and vibrant colors. The non-settling liquid formula lets you avoid shaking and stirring.

25522....Orange.....Pint 12/Case..... \$16.01
25523....Green.....Gallon.....\$6.85
25521....YellowGallon.....\$6.85
25513....Black.....Quart.....\$2.22
25507....BlueQuart.....\$2.22
25512....BrownQuart.....\$2.22
25508....Green.....Quart.....\$2.22
25511....Magenta.....Quart.....\$2.22
25506....Orange.....Quart.....\$2.22
25514....RedQuart.....\$2.22
25516....Turquoise BlueQuart.....\$2.22
25515....Violet.....Quart.....\$2.22
25509....WhiteQuart.....\$2.22
25510....YellowQuart.....\$2.22



Crepe Paper Streamers

Crepe paper streamers, canary yellow,
1-3/4"x500' roll.

12023....Roll \$3.54



Build-it Ground Construction Vehicles

STEM learning set, build ground construction vehicles assembly, snap together plastic pieces, digger, dump truck, bulldozer and driver. Ages 2-4.

43532....1/Set \$26.55



Build-it Set Robot Factory

STEM learning set, robot assembly, large pieces, activity guide. 18 pieces. Ages 2-6.

43531....1/Set \$26.55



Build-it Set Car-Plane-Boat

STEM learning set, car, plane, or boat mix and match parts building assembly, durable, 15 pieces, activity guide, ages 2-6.

43529....1/Set \$26.51



Build-it Set Rocket-Train-Helicopter

STEM Learning Set – Rocket, train, helicopter, r and match parts building assembly. Ages 2-5.

43528....1/Set \$26.55



STEM Pendulum Physics Challenge

STEM learning set, pendulum physics demonstration challenges, adjustable. Ages 5-9.

43557....1/Set \$15.01



STEM Catapult Physics Challenge

STEM learning set, catapult building physics demonstration challenges. Ages 5-9.

43556....1/Set \$15.01



STEM Wacky Wheels Paddlewheel Launcher

STEM learning set, wacky wheels paddlewheel launcher course challenges. Ages 5-9.

43554....1/Set \$15.01



STEM Magnet Movers Activity Set

STEM learning set, magnet movement, assorted magnets. Ages 5-9.

43525....1/Set \$16.13



STEM Code and Go Robot Mouse

STEM learning set, programmable code and go robot mouse, coding cards. Ages 4-9

43552....1/Set \$21.84



STEM Gears Monkeys Building

STEM learning set, monkey gears building activity set, 100+ assorted snapping pieces. Ages 4-8.

43524....1/Set \$41.88



STEM Motorcycle Gears

STEM learning set, Motorcycle gears building activity set, 30 assorted pieces. Ages 4-8.

43549....1/Set \$14.68



STEM Space Explorers Gears Building Set

STEM Learning set, space explorers' gears building activity set, astronauts, 77 assorted pieces. Ages 4-8.

43548....1/Set \$36.51



STEM Wrecker Gears Activity Set

Stem learning set, wrecker gears activity set, plastic assorted gears, assorted accessories. Ages 4-8.

43547....1/Set \$13.88



Washington prices listed include delivery. Delivered prices to the San Juan Islands and other States may be slightly higher.
For all current pricing, please visit www.kcda.org.
All KCDA prices are subject to change without notice.

KCDA'S NEWEST PRODUCTS

STEM Rover Gears Activity Set

Stem learning set, kinesthetic rover gears include snap gear pieces for open ended building. 43 assorted pieces. Ages 4-9.

43544....1/Set \$14.68



STEM Early Math Link Builders

Stem learning set, math link builders includes, 100 link cubes cast in 10 vibrant colors. Activity guide that includes building challenges, lessons in symmetry, sequencing, and perspective building. Ages 5-9.

43562....1/Set \$15.31



STEM Force and Motion Activity Set

Stem learning set, force and motion includes cars, double-sided tracks, weighted blocks, pendulum ball, ladder with 2 removable bars, and a comprehensive activity guide with reproducible materials. Ages 5-9

43561....1/Set \$21.84



STEM Simple Machines Activity Set

Stem learning set, simple machines activity set, 6 machines, assorted accessories, activity cards and guide. Ages 5-9.

43559....1/Set \$21.84



STEM Magnets Activity Set

STEM learning set, magnets, cars, tray with maze, string activity cards, activity guide. Ages 5-9.

43553....1/Set \$25.25



STEM Sink Or Float Physics Activity Set

STEM learning set, submarine, and floating raft physics activity set, 10 activity cards, 20 activities. Ages 6-10.

43558....1/Set \$21.84



STEM 4 Set Activity Bundle

Stem learning sets.

- **Force and Motion Activity Set.** Includes cars, tracks, assorted accessories, activity guide.
- **Simple Machines Activity Set.** Includes 6 machines, assorted accessories, activity cards and guide.



- **Magnets Activity Set.** Includes magnets, cars, tray with maze, string activity cards, activity guide.
- **Sink or Float Activity Set.** Includes submarine and floating raft physics activity set, 20 activities.

43560....4/Set \$88.04

Flex-Space Comfy Classroom Carpet

Classroom carpet rug, solid blue, 9"x12", synthetic fiber, flexible backing.

43533....Each \$411.56



Washington prices listed include delivery. Delivered prices to the San Juan Islands and other states may be slightly higher. For all current pricing please visit www.kcda.org. All KCDA prices are subject to change without notice.

KCDA'S NEW AND UPDATED CONTRACTS

For more than 80 years, KCDA has been a leader in providing centralized procurement services. Every dollar spent using our contracts increases our purchasing power and helps us get lower pricing. We are governed by the basic laws and regulations that apply to our members so you can be assured that our contracts are safe, legal, and compliant.

Contracts Awarded in September, October and November 2021

Artco Bell Furniture, Bid 21-136

Binder Indexes, Bid 22-009

Bus Stop Arm Cameras, Bid 21-220

Calendars, Bid 22-370

Duplicating Supplies/Ink & Toner Cartridges, Bid 22-037

General Furniture, Bid 21-130

HVAC Maintenance, Bid 19-280

Integrated Security Systems & Fire Controls, Bid 21-360

Interactive Technology, Bid 18-053

Lockers, Equipment & Supplies, Bid 21-402

Maintenance Machines, Bid 20-261

Portable Air Purifier, Bid 22-429

Tapes & Adhesives, Bid 22-033

Wireless Bus Video Security Systems, Bid 18-215

FROM OUR MARKETING DEPARTMENT



New Contract Offerings from AEPA and KCDA

If you have recently logged on to the kcda.org website you probably have seen the AEPA logo prominently displayed on our Home Page.



AEPA is a national association of 29 state purchasing agencies that have banded together to consolidate and utilize their collective purchasing power. AEPA regularly solicits and awards national purchasing contracts focused on serving K-12 education. Each of AEPA's respective states can then offer these contract and services to their members. KCDA is a founding member of AEPA and is pleased to extend three (3) new AEPA contracts to our membership throughout the Pacific Northwest and Alaska.



Deledao creates artificial intelligence monitoring products designed to keep children safe while learning online. Deledao is the only K-12 web filter and parental control that uses real-time AI to filter access and the results offered to children. For more information on Deledao please see KCDA Contract AEPA 021-G.



Kajeet is a wireless provider that offers secure, controlled wireless experiences for a variety of industries, including education, healthcare, business, and telecommunications. For more information on Kajeet please see KCDA Contract AEPA 021.5D.



Service Master offers KCDA members 65+ years of water, fire & mold restoration experience. When the unexpected happens, Service Master is there to restore damage from fires, floods and other natural disasters. For more information on Service Master please see KCDA Contract AEPA 021.5B.

Through our continued involvement with AEPA, KCDA is focused on offering our members an ever evolving range of contracts and services to meet the needs of our school district members throughout the Pacific Northwest and Alaska.

*Dane Hewitt
Director of Marketing*



KCDA Social Media Highlights

Daktronics, a 2020 KCDA Top 25 Vendor, is a world leader in dynamic audio-visual communication systems. They design and install interior and exterior LED scoreboards and dynamic audio-visual communication systems for KCDA members.

Check out this recent video display scoreboard install for Kent School District's French Field.



Follow us on social to see this and other projects for our members!



KCDA Purchasing



@KCDA PurchasingCoop

*Randi Michie
Digital Marketing*

STAFF DIRECTORY

Administrative

David Mahalko, Executive Director
dmahalko@kcda.orgext. 161

Yohan Lee, Chief Financial Officer
ylee@kcda.orgext. 110

Riesa Ragan, Director of Human Resources
rragan@kcda.orgext. 126

Shalena Putnam, Accounting Specialist
sputnam@kcda.orgext. 112

Tracie Keller, Accounting Supervisor
tkeller@kcda.orgext. 139

Stephanie Carson, Accounts Payable
scarson@kcda.orgext. 115

Van Nguyen, Accounts Receivable
tnguyen@kcda.orgext. 163

Karen Robertson, General Accounting Assistant
krobertson@kcda.orgExt. 114

Customer Service

Dane Hewitt, Director of Marketing
dhewitt@kcda.orgext. 117

Customer Service
Pennie Britz, Lead
pbritz@kcda.orgext. 120

Etta Smith-Rice
esmith-rice@kcda.orgext. 148

Pauline Peterson
ppeterson@kcda.orgext. 128

Lima Lotoa
tlotoa@kcda.orgext. 118

Wendy Ettel, Website Designer
wettel@kcda.orgext. 146

Randi Michie, Digital Marketing Specialist
rmichie@kcda.orgext. 152

Field Representatives

Ryan Burge
rburge@kcda.orgext. 151
Representing Counties: Adams, Asotin, Columbia, Franklin, Garfield, Island, Kitsap, S. King, Pierce, San Juan, Skagit, N. Snohomish, Thurston, Walla Walla, Whatcom, Whitman, Yakima.
Representing School Districts: Auburn, Enumclaw, Tahoma.

Customer Service

Kevin Hedeon
khedeon@kcda.orgext. 137
Representing Counties: Chelan, Douglas, Ferry, Grant, Kittitas, Lincoln, N. King, Okanogan, Pend Oreille, S. Snohomish, Spokane, Stevens.
Representing School Districts: Bellevue, Edmonds, Everett, Federal Way, Highline, Issaquah, Kent, Lake Washington, Mukilteo, Northshore, Renton, Riverview, Seattle, Shoreline, Snoqualmie Valley.

Mike Rebitzke
mrebitzke@kcda.orgext. 162
Representing Counties: Clallam, Clark, Clowitz, Grays Harbor, Jefferson, Klickitat, Lewis, Mason, Pacific, Skamania, Wahkiakum.
Representing States: Alaska, Idaho, Oregon.

Purchasing

Thomas Kim, Director of Purchasing
tkim@kcda.orgext. 143
LED Lighting Solutions, Portable Air Purifiers, School & Instructional Supplies, Security Solutions, Vehicles.

Contract & Procurement Specialists

Rita Alford
ralford@kcda.orgext. 119
Carpet & Specialty Flooring, Furniture - Artco Bell/General/HON/Virco, Musical Instruments, Whiteboards & Display Cases,

Valerie Buckbee
vbuckbee@kcda.orgext. 134
Custodial Supplies - Plastic Can Liners, Digital Display Solutions, Disaster Recovery, Early Childhood Supplies and Furniture, Field Lighting, First Aid Supplies, Maintenance Machines, Modular Athletic Field Protection, Natural & Synthetic Turf Surfaces, Sport Field Drainage and Irrigation Sprinkler Systems.

Karl Durham
kdurham@kcda.orgext. 131
Auditorium Seating, Bleachers, General Office Classroom Supplies - Binders/Binder Indexes/Markers/Tapes & Adhesives/Writing Instruments, HVAC Building Systems, Integrated Security Systems & Fire Controls, Lockers, Promotional Items, Roofing & Related Services.

Julie Harris
jharris@kcda.orgext. 116
ADA/IBC Compliant Maintenance Ramps & Steps, Calculators, Ceramic Supplies, Commercial Kitchen Equipment, Copiers/MDF's, Custom Printed Materials, Food Staples and Canned Goods, HVAC Maintenance, Library Supplies, Lunchroom Supplies & Equipment, Plumbing Supplies.

Purchasing

Janice Lee
janice.lee@kcda.orgext. 141
Athletic Apparel - Uniforms & Accessories, Calendars, Commercial Fitness Equipment, Computer and Technology Catalog, Crayola Art & Craft Supplies, Critical Communications Systems, Facility Management Software, Interactive Technology, Mobile Cellular Connectivity, Physical Education Equipment & Supplies, Science Equipment & Supplies, Telephone Communications Systems.

Karri Wyman
kwyman@kcda.orgExt. 133
Art Brushes, Art & Craft Supplies, AV Equipment & Supplies, Bus Stop Arm Cameras, Career & Technical Education, Digital Bus Security, Digital Resources, Landscaping & Grounds Equipment, Patient Care Equipment, Portable Classrooms/Modulars, Playground Equipment & Matting, Restroom, Playground & Recreational Structures.

Debbie Day, Senior Buyer
dday@kcda.orgext. 130
Supports: Custodial, General Supplies
Responsibilities: Inventory Item Maintenance, Inventory Management Support, Purchasing for Strategic Departments and Training.

Minsoon Bae, Purchasing Specialist
mbae@kcda.orgext. 129
Classroom Aids, HVAC Air Filters, Construction Paper, Multipurpose Copy Paper - White only, Paper Supplies/Dated Materials/Reference Resources, Printing Paper- Colors & Specialty, Duplicating Supplies/Ink & Toner Cartridges.

Carmen Parker, Inventory & Purchasing Assistant
cparker@kcda.orgext. 149
Orders and Supports Arts & Crafts

Information Services

Computer Operator/Programmers
Bert Piedlow, IT Systems Administrator
bpiedlow@kcda.orgext. 136

Dustin Lohse, Network Administrator
dlohse@kcda.orgext. 113

Mario Mitchell, Web Developer
mmitchell@kcda.orgext. 150

Warehouse

Barry Fredericks, Manager
bfredericks@kcda.orgext. 154

Tony Apodaca, Assistant Manager
tapodaca@kcda.orgext. 121

