



Benefits of School

Bus WiFi

kajeet®

A school bus isn't just a big, yellow people mover – with the **Kajeet SmartBus™** solution, it becomes a classroom on-the-go. **Up to 65 students can connect at one time**, making it ideal for daily bus routes, athletic buses, field trips, mobile STEM labs, and bookmobiles. Amid school closures, internet-enabled school buses are parked in school parking lots, neighborhoods, apartment complexes, and mobile home parks to create community hotspots for students.

13%

have WiFi installed on some or all buses.

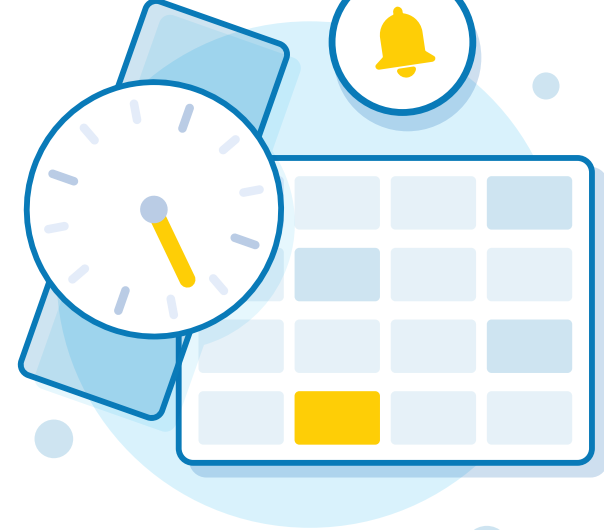
School Transportation News polled over [500 transportation leaders](#) in May 2020 and found that 13% of school districts already have WiFi installed on some or all buses.

19%

are interested in adding WiFi to their school bus fleets.

In a survey with [300 K-12 transportation leaders](#), 19% of respondents stated that they were interested in adding student WiFi to their fleet in the 2020-21 school year.

SUPPORT STUDENTS' ACADEMIC SUCCESS



Students spend on average **40 minutes per day** on daily bus routes.

EXTEND THE CLASSROOM TO THE BUS

Students spend an average of **40 minutes per day on their daily routes**. That adds up to **180 hours every school year**. Students who participate in extracurricular activities, such as athletics and clubs, spend even more time on the school bus traveling to and from events.

When buses are equipped with WiFi, this time can be spent completing homework. For students without Internet at home, or for those with other responsibilities after school, such as caring for siblings or working a job, this time spent on the bus may be the only time they have to complete their online assignments.

"Clearly, when we give kids the ability to take home a Chromebook, we have them learn at home. And now the same is true on your way home. our kids are so busy, travel home and then jump in a car to little league practice. Now you can do homework on the 45-minute bus ride."

Dan Mannix, Superintendent, Beekmantown Central School District

CONNECTING STUDENTS AMID SCHOOL CLOSURES

Schools may close for many reasons, such as snow days, hurricanes, and as we saw in 2020, a health crisis. When schools are forced to close and shift to online instruction, **students without Internet at home will find it difficult to participate in virtual learning and complete online assignments**.

Districts can easily **turn their WiFi-equipped buses into community hotspots** to help provide access for students. The buses can be parked in neighborhoods, apartment complexes, mobile home parks, and school or church parking lots.

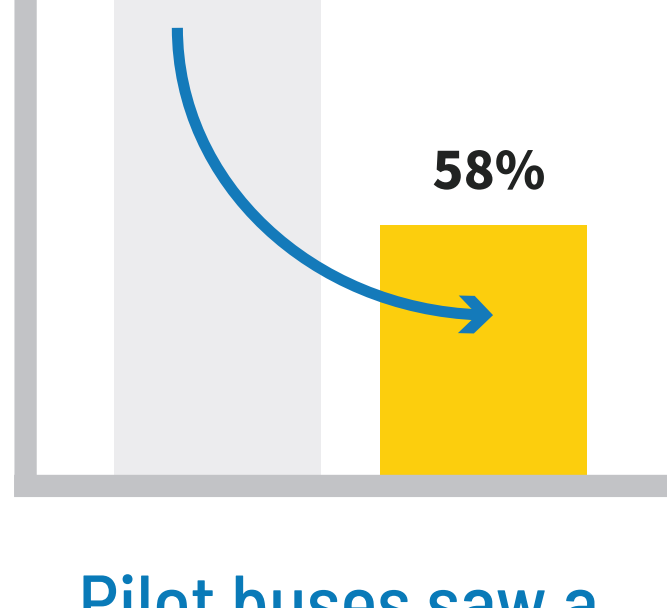


STUDENT AND DRIVER SAFETY

REDUCTION IN DISCIPLINARY ACTIONS

[Raytown School District](#) launched a WiFi pilot program on six of their buses. After installing WiFi, the number of **disciplinary referrals across the pilot buses dropped from 105% to 58% — a 45% decrease overall**.

Another district, Aurora Public Schools, saw a **75% decrease in reported disciplinary issues** from the 2017-18 school year to the 2018-19 school year once they installed WiFi on their buses.



Pilot buses saw a **45% decrease in disciplinary action**.

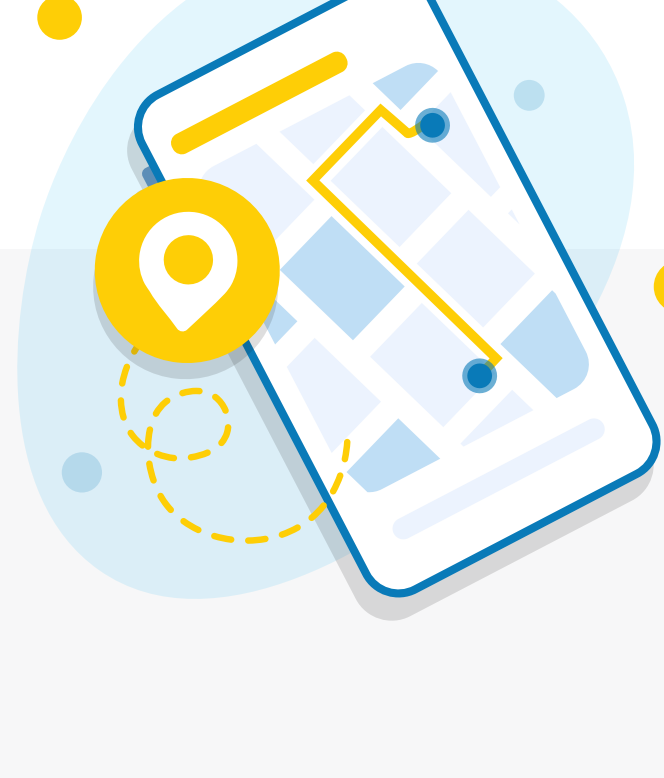
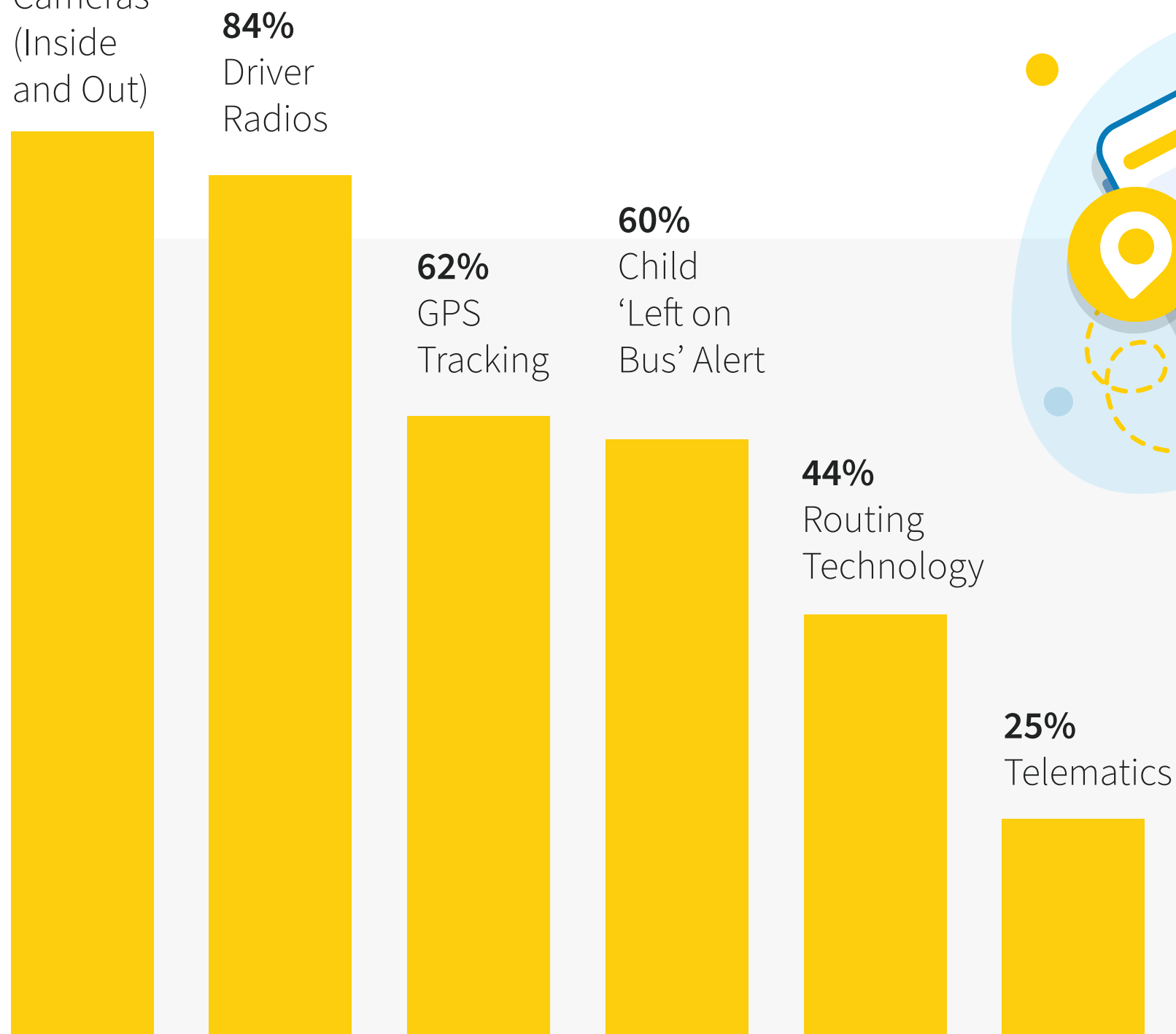
"I was not surprised to see that when kids are busy and have something to work on, they'll stay out of trouble. I was shocked at the anecdotal and data reports of how much better it was, though. I wasn't expecting those kinds of numbers."

Kevin Easley, Director of Transportation, Raytown School District

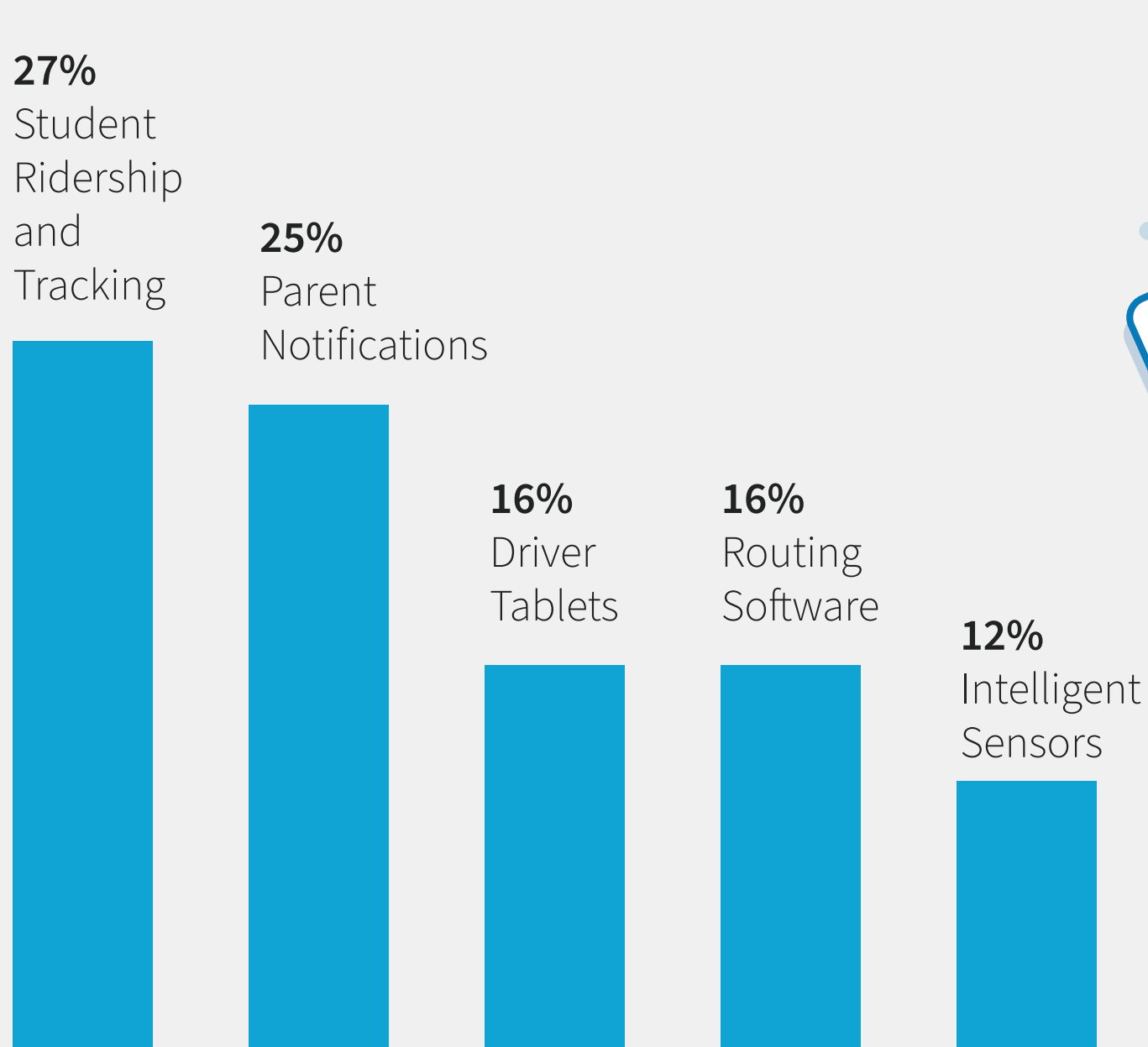
CONNECT YOUR BUS TECHNOLOGY

WiFi on the bus can be used for more than just connecting students. It can be used to connect any bus tech that requires an Internet, such as driver tablets, GPS, telematics, and cameras. The number of devices and software solutions used in K12 transportation increases every year

According to a [survey of 300 K-12 transportation leaders](#), these are the technologies currently deployed on their buses:



Here are technologies these same transportation leaders have on their wish list for the 2020-21 school year:



GETTING STARTED

HERE ARE SOME THINGS TO CONSIDER BEFORE ADDING WIFI TO YOUR FLEET.



Web Filters – How will your school bus WiFi solution be filtered to meet CIPA guidelines and to keep student safe and on-task?

Kajeet SmartBus™ includes customizable CIPA-compliant filters designed for K-12.



LTE Network – Which wireless network will you choose to connect your devices?

Kajeet connects on all major North American wireless networks – choose the network(s) that work best in your area.



Device and Data Management – How will you manage device usage and data consumption across your fleet?

Kajeet SmartBus™ includes access to a patented device and data management portal, Sentinel® where administrators can manage devices, data allocations, filters, and access controls.



Contract AEPA 025.5D